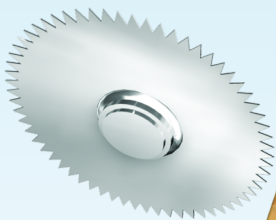




SOFTWARE GUIDE

Simple V13



**DAZER
DAZER**

V5

This page is intentionally left blank.

CONTENTS

SIMPLE SOFTWARE	7
BASIC STEPS	
Log in and out	7
Open and close a file	9
Navigate multiple open files	9
Merge files	11
Save a file	12
ADD MATERIALS	
New material	13
Reassign a material	14
Pick a material	14
Ignore materials	14
MAIN WINDOW	
Toolbar	15
Multi-view Tabbed Pane	20
Member List tab	21
Member Tree tab	24
Optimised tab	25
Layout tab	28
Member Diagram	29
Colour legend and types of cuts	29
Member details	30
Cut parameters	31
Control Bar	31
Command buttons	31
Saw loading options	32
Speed sliders	32
Monitoring panel	33

Machine Name	34
Message bar	34
Uptime counter	34
Error notification	34
Packfeeder 2 status	35
WoodRunner status (third-party product)	36

MATERIALS LIST

Picklist webpage	38
Access in Simple	38
Quantity Summary	39
Loading Order	39

OPTIONS

Access	40
General	41
Optimisation	43
Sorting	47
Offcuts	48
Materials	50
Kickoff	52
Statistics	53
Exit	54

BATCH OPTIMISE

File selection	56
Output options	57
Results file	58

MANUAL CONTROL

Manual Mode	59
Access	59
Feeders	59
Saw head	60
Peripherals	61
Other features	61
Exit	62
Material Handling	62
Access	62
Automatic Infeed Table	62
Outfeed Kickoff Table	63
Exit	63

PRINTING

Printer Setup	64
Markings	65
Company Name	70
Plate Marking Control Panel	71
Access	71
Print modules	72
Other features	72
Print Preview	73
Access	74
Printable areas	74
Controls	75

MEMBER EDITING

Basic Member Editing	75
Edit a designation	76
Edit the quantity	76
Edit the material	77
Edit a dimension	78
Edit an angle	79
Complete Member Editing	79
Edit a member	80
Create a new member	81
Custom members	81
Special features	84

3D MODEL

Access	86
Legend	87
Controls	87

REMOTE VIEW

Access	88
Use	89
Job Ordering	89

USER MANAGEMENT

Add/Edit a user	92
User Access Control	93
User Access Levels	93
Change the access level of a user	93

Password Level	94
Remove a user	94
Change the logged-in user's password	94

PRODUCTION STATISTICS

Statistics webpage	95
Daily Reports	95
Monthly Reports	96
User Summaries	97

ADVANCED FEATURES

Setup	97
Diagnostics	99
Kickoff Rule Syntax	99
Automatic Length Adjustment	102


SIMPLE CHANGELOG

Version 14	102
Version 13	102
Version 12	103
Version 11	103
Version 10	103
Version 9	104
Version 8	104
Version 7	104

SIMPLE SOFTWARE

Simple is the name of the software that is used as an interface to operate the saw. This software offers a wide range of features, some of which are listed below:

- › Compatibility with all major cut file formats
- › Flexible job optimisation
- › Multi-level user access
- › Multi-document interface
- › Manual editing and creation of members
- › Member printing management
- › Three different views to cut from
- › Statistics output

To begin using Simple, double-click  on the desktop.

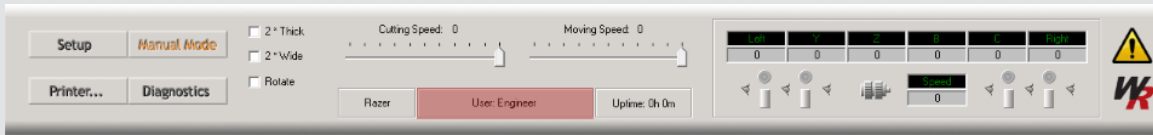
BASIC STEPS

Log in and out


Every user can have their own user account when operating the saw. This makes it possible to provide different levels of system access to personnel and enables the plant manager to review productivity levels of staff. For more details, see *User Management* on page 90.

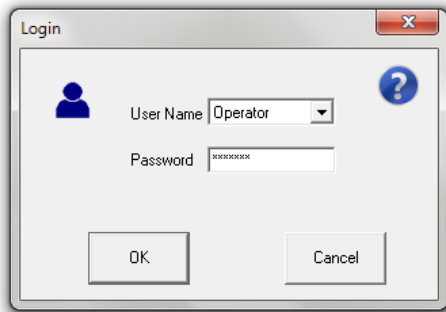


Note: A user must be logged in to start cutting. The name of the currently logged in user is displayed in the message bar located at the bottom centre of the main window and highlighted in red below (see page 34).



To log into Simple, do the following:

1. Click  on the toolbar.
2. The following window pops up:



Select your user name from the drop-down list.



Note: For more details on how to edit the user list, see *Add/Edit a user* on page 92 and *Remove a user* on page 94.

3. Enter your password.





Notes:

- The **Password** field is greyed out if the access level of the selected user is below the password level set in the User Management window (see page 94).
- The password of any user can be changed by anyone with a supervisor or engineer access level in the Edit User window (see page 92).
- Once logged-in, each user can change their own password in the Change Password window (see page 94).

4. Click .

To log out of Simple, do one of the following:


- ▶ Click  on the toolbar.
- ▶ Select **Logout** from the **File** drop-down menu.
- ▶ Click  on the toolbar to let another user log in.

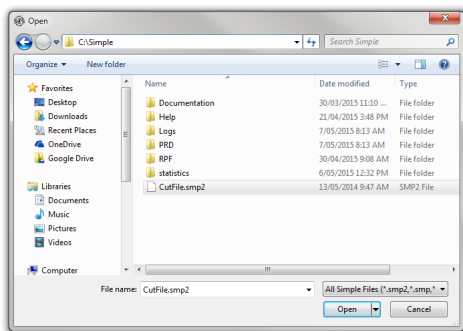
Open and close a file

The following file types can be loaded into Simple to run cutting sequences:

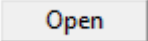
- Simple files (*.smp)
- Simple files version 2 (*.smp2)
- MiTek files (*.mme)
- TrusSource files (*.dat, *.*)
- Omni files (*.omn)
- Alpine files (*.trs)
- Max Customer Cutter files (*.ems)
- Blade XML files (*.xml)
- IMP files (*.imp)

To open a file, do the following:


1. Click  on the toolbar, or select Open... from the File drop-down menu.
2. The following window pops up:



Browse for the file you wish to open.

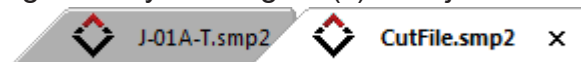
3. Select the file and click  , or just double-click it.

To close a file, close the corresponding file tab or select Close from the File drop-down menu.

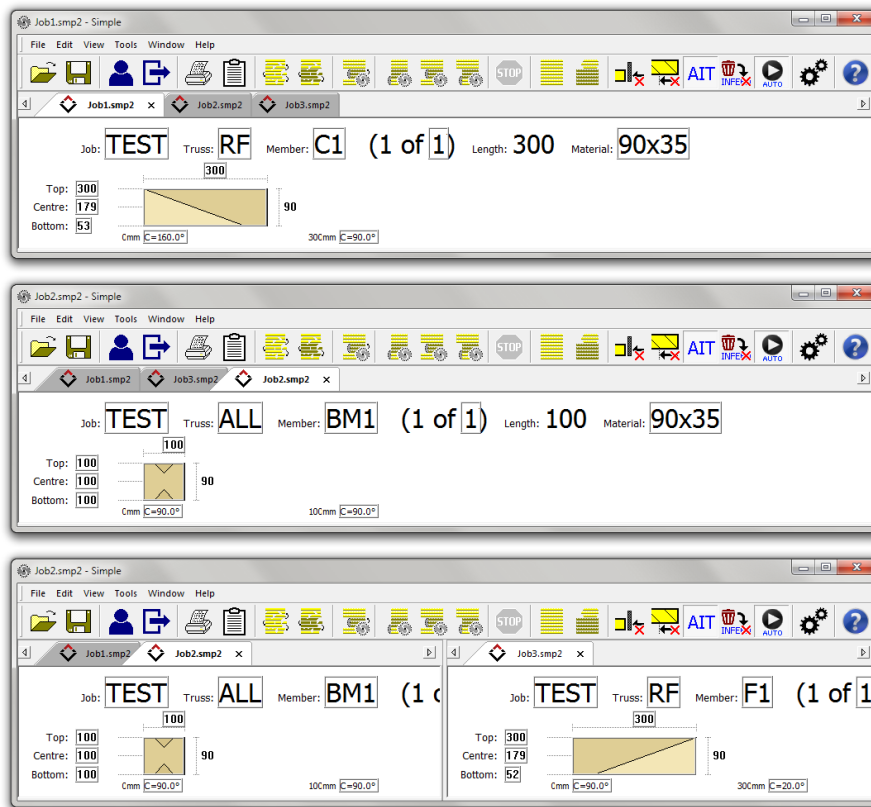
 Any unsaved changes are lost.

Navigate multiple open files

Several job files can be open at the same time and managed in the same window. Each job file is opened in a new job tab to the right of any existing tab(s). The job tabs are located under the toolbar and look like this:

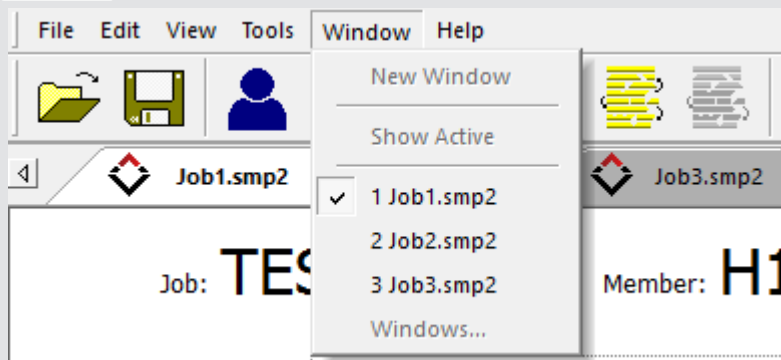


You can switch to any open job by clicking on its tab. Job tabs can be dragged around to change the order or dragged out into a separate pane to display two files side by side.



Notes:

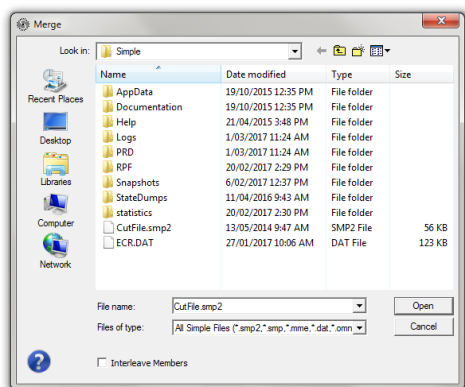
- When the saw is not running, all jobs can be reordered to any order required. When the saw is running, only jobs to the right of the current running job can be reordered as they have not been run yet.
- If a Packfeeder 2 is running, only jobs to the right of the next pending job can be reordered as the picklist has already been sent for the current job and the next one.
- When a cutting sequence is running, the current job tab is displayed with a green background. If automatic Job Sequencing is enabled (see page 19), the next job tab will be displayed with a yellow background.
- You can also switch to any open file by selecting the file you wish to view from the **Window** drop-down menu.





Merge files

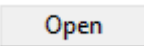
To merge several files into one single file, do the following:


1. Open one of the files you wish to merge (for more details, see *Open and close a file* on page 9).
2. Select Merge from the File drop-down menu.
3. The following window pops up:




Browse for the other file(s) you wish to merge.

 **Note:** if there are more than one additional file to merge located in the same folder, you can select several files by pressing and holding down either the  key for consecutive files or the **Control** key for non-consecutive files.

4. Select the file(s) and click  .
 - ↳ The members contained in the selected file(s) are added to the current member list.

 **Note:** If **Interleave Members** is checked, the new members will be interleaved (i.e. alternated) with the existing ones. If unchecked, they will simply be added to the end of the member list.


5. Repeat steps 2 to 4 for files located in different folders, if any.
6. Save the merged file by doing one of the following:
 - ▶ To merge the files into the currently open file, click  on the toolbar, or select **Save** from the File drop-down menu.
 - ▶ To merge the files into a new file, select **Save As...** from the File drop-down menu (for more details, see *Save a file* on the next page).

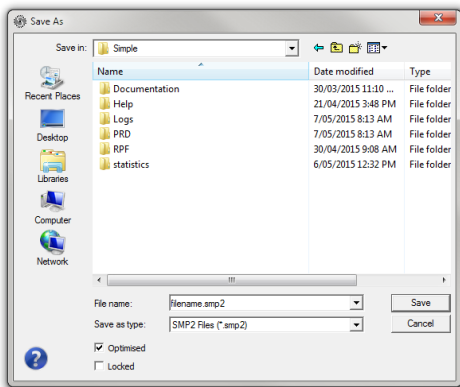
Save a file



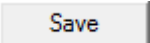
Note: files can only be saved as Simple files version 2 (*.smp2).

To save the file displayed in the current tab, do the following:

1. Click  on the toolbar, or select Save from the File drop-down menu.
 - ↳ If the file has already been saved, it will be overridden using the settings previously defined in the Save As window.
2. If the file is saved for the first time, the following window pops up:



Browse for the file destination.

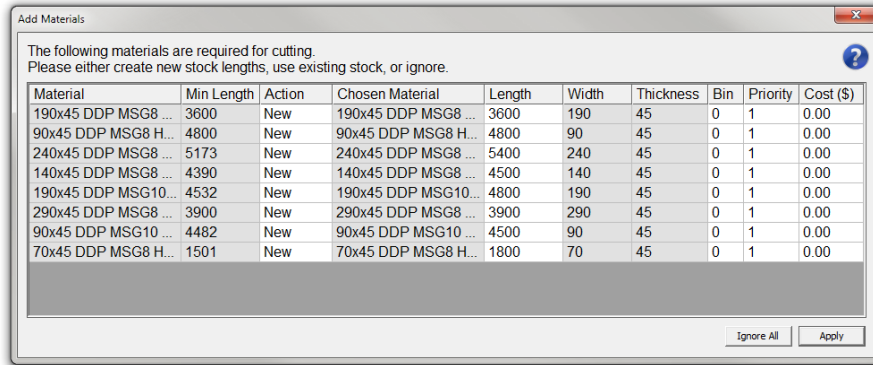
3. In the File Name field, enter a name for the file.
4. Enable one, both or none of the following options:
 - » **Optimised:** The current optimisation order will be preserved and embedded in the file. No automatic optimisation will occur again upon loading the file. However it will still be possible to modify the file or manually run a new optimisation.
 - » **Locked:** The file and the embedded optimisation will be locked. It will never be possible to modify the file or run an optimisation again, except through the Batch Optimise feature (see page 54).
5. Click .



Note: to save a new copy or change the save settings of a file, select Save As... from the File drop-down menu and proceed as above from step 2.

ADD MATERIALS

The Add Materials window pops up each time an optimisation is run if required materials are missing or disabled in the materials database (see page 50). It can occur either when an unoptimised file is loaded or when an optimisation is run manually.



The list contains all the materials that are missing for a complete optimisation. For each required material, you can do either of the following by double-clicking the **Action** field:

- ▶ Create a **new** material
- ▶ **Reassign** it to an existing material
- ▶ **Pick** a disabled material
- ▶ **Ignore** it



Note: By default, the **Actions** field is set to "New" for each missing material, or "Pick" for each disabled material. In the latter case, the shortest matching material will be picked.

Click **Apply** to exit the window and execute the decisions made for each material in the list.

New material

If you select **New** in the **Actions** field, a new material will be added to the materials database for the corresponding required material.

The length, bin number, priority and cost of each new material can be edited in the relevant fields.



Note: the following rules apply:

- The length of the new material must be equal to or higher than the value specified in the **Min Length** field (by default, it is set to the nearest multiple of 300 mm above the minimum length).
- The priority must be "1" or above.

Reassign a material

If you select **Reassign** in the **Actions** field, a window lets you choose from a list of existing materials that meet the minimum length requirement, regardless of their description, width, thickness and whether enabled or not.



Note: the button is greyed out if the materials database does not contain any material that meet the minimum length requirement.

If a chosen material needs to be re-enabled, its priority is automatically changed from "0" to "1". The priority of each reassigned material can be changed to any value above "1".

Pick a material

If you select **Pick** in the **Actions** field, a window lets you choose from a list of disabled materials that perfectly match the description of the required material.



Note: A disabled material is a material with a priority set to "0".

The button is greyed out if the materials database does not contain any disabled material that perfectly matches the description of the required material, or if the only matching material has already been picked by default.

The chosen material is automatically re-enabled (its priority is changed from "0" to "1"). A higher priority can be specified for each picked material.

Ignore materials

If you select **Ignore** in the **Actions** field and click **Apply**, a message box will show the number of members that could not be optimised. The Add Materials window will then pop up again the next time an optimisation is run.



Note: you can click **Ignore All** to quickly ignore all the missing or disabled materials and dismiss the window.

MAIN WINDOW

Toolbar



Note: to show or hide the toolbar, check or uncheck **Toolbar** in the **View** drop-down menu.



The toolbar is available at the top of the main window. It gives quick access to the following actions and settings:



Opens the Open window to load a file (see page 9).



Saves the file currently open in the active tab, or opens the Save As window (see page 12) if the file has never been saved before.



Opens the Login window (see page 7).



Logs out the current user.



Opens the standard print window to print the contents of the active tab (Member List or Optimised).



Opens the Materials List window (see page 37).



Optimise All: runs the optimisation of all members in the Member List tab.



Note: if there are already some partially or completely cut members (indicated by a quantity greater than "0" in the Done column), a dialog box will pop up. Choose whether you want to optimise all the members or only the uncut members.



Optimise Selected: runs the optimisation of the members that have been selected in the **Member List** tab.



Note: if there are already some partially or completely cut members (indicated by a quantity greater than "0" in the **Done** column), a dialog box will pop up. Choose whether you want to optimise all the selected members or only the selected uncut members.



Optimise On-the-fly Selected: commands the saw to cut the members that have been selected in the **Member List** tab out of unknown lengths of timber that can be randomly fed into the saw. This function is great for consuming long and varying length offcuts.

Select the members you wish to cut, then click this button and press the green **START** button on the operator console to start cutting. The saw will dynamically measure each new length of timber that is fed, run an optimisation process on the members remaining to be cut for that length (much like normal optimisation) and proceed to cut all the members it can out of that board with the least waste possible.



Notes:

- All the selected members must have the same width and thickness for this function to operate. Same timber grade is also recommended.
- If there are already some partially or completely cut members (indicated by a quantity greater than "0" in the **Done** column), a dialog box will pop up. Choose whether you want to optimise on-the-fly all the selected members or only the selected uncut members.
- The operator will be prompted to enter the number of the bunk to pick the timbers from with the WoodRunner (if installed).
- If no members can be cut from the current measured stick, Simple will display a warning, eject the stick and continue to cut.



Cut All Uncut: commands the saw to cut all uncut members in the active tab (Member List or Optimised).

Click this button and then press the green START button on the operator console to start cutting. As cutting progresses down the list, the saw will skip over any members that have already been cut.



Note: Already cut members are indicated by a quantity greater than "0" in the Done column of the Member List tab, or tagged with an asterisk in the left-most column of the Optimised tab. If a cutting sequence is launched from the Optimised tab, the cut members will be updated in both tabs. If a cutting sequence is launched from the Member List tab, the cut members will be updated in this tab only.



Cut Selected Uncut: commands the saw to cut the uncut members that have been selected in the active tab (Member List or Optimised), or any member selected in the Member Tree tab.

Select the members you wish to cut, then click this button and press the green START button on the operator console to start cutting.



Note: in the Optimised tab, all members in the same stick must be selected for this function to work properly (i.e. the first selected member must be a stock material line and all members included in that material must be selected).



Cut Remaining Uncut: commands the saw to cut the uncut members from the member selected in the active tab (Member List or Optimised).

Select the member you wish to start from, then click this button and press the green START button on the operator console to start cutting. The saw will work its way down the list from this point.



Note: in the Optimised tab, the selected member must be the only one or the first one in a stick for this function to work properly (i.e. it must be a stock material line).



Makes Simple stop sending commands to the saw.



Note: The saw will complete the execution of the last command sent and will then stop. A new cutting sequence will have to be sent to restart the saw.



Set All To Uncut: sets to uncut status all members in the active tab (Member List or Optimised).



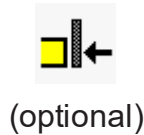
Set Selected To Uncut: sets to uncut status the members that have been selected in the active tab (Member List or Optimised).



Set Selected To Cut: sets to cut status the members that have been selected in the active tab (Member List or Optimised).



Indicates that the follower is currently disabled. Click to enable the follower.



Indicates that the follower is currently enabled. Click to disable the follower.



Note: After turning the follower on or off, you need to wait for the status display window to disappear then rehome the saw.



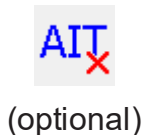
Indicates that the Long Lead feature is currently disabled. Click to enable the Long Lead feature.



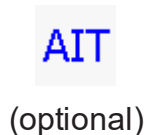
Indicates that the Long Lead feature is currently enabled. Click to disable the Long Lead feature.



Note: The Long Lead feature moves all cuts 100 mm (default value of variable P521) along the timber. This can be useful when cutting a member from a piece of waste timber with a non-square leading end.



Indicates that the Automatic Infeed Table is currently disabled. Click to enable the Automatic Infeed Table.



Indicates that the Automatic Infeed Table is currently enabled. Click to disable the Automatic Infeed Table.



Indicates that long pieces of waste (after all members in the stick are cut) are currently sent to the outfeed. Click to send long pieces of waste back out to the infeed.



Indicates that long pieces of waste (after all members in the stick are cut) are currently sent back out to the infeed. Click to send long pieces of waste to the outfeed.



Indicates that the automatic Job Sequencing feature is currently disabled. Click to enable the automatic Job Sequencing feature.



Indicates that the automatic Job Sequencing feature is currently enabled. Click to disable the automatic Job Sequencing feature.



Note: The Job Sequencing feature enables the saw to automatically start cutting the optimised list in the job file tab to the right of the current job file, when and only when the last member in the optimised list of the current job file has been cut. With this feature enabled, the current job file tab will be coloured in green and the job file tab to be cut next will be coloured in yellow. When the current job file is finished, a pop-up will notify the operator the new job file has started and the colour of the tabs will also change automatically. The order of the non-active job file tabs (yellow or grey) can be changed at any time during cutting by clicking and dragging ahead or behind other tabs. The inactive job files can even be re-optimised while cutting the active one.

This feature will only work if the cutting sequence has been started in the first optimised list by using either the **Cut All Uncut** or **Cut Remaining Uncut** function.



(optional)

Indicates that the Stak-n-Gap is currently disabled. Click to enable the Stak-n-Gap.

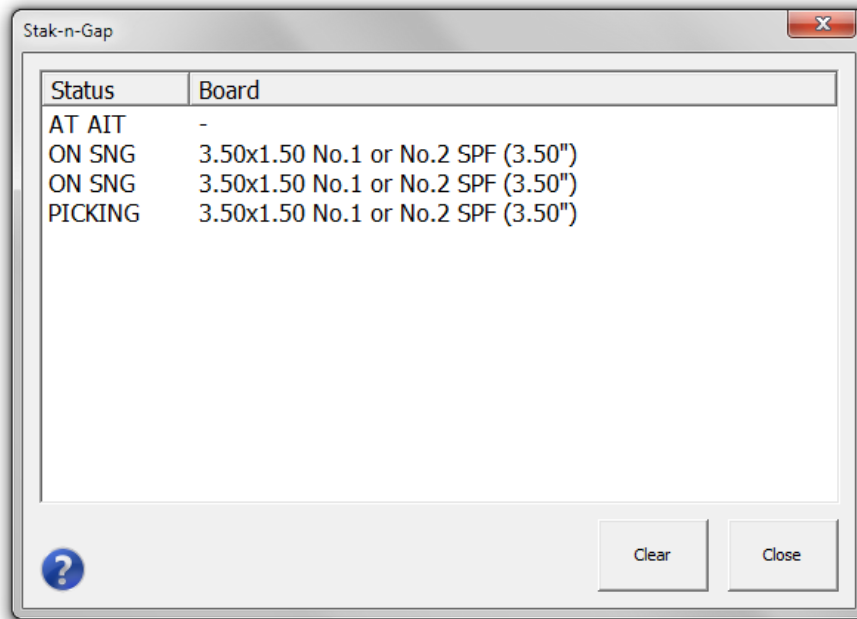


(optional)

Indicates that the Stak-n-Gap is currently enabled. Click to disable the Stak-n-Gap.



Note: to open the Stak-n-Gap interface (see image on the next page), select **Stak-n-Gap...** from the **Tools** drop-down menu in the Simple menu bar.



The Stak-n-Gap interface displays the current status of the Stak-n-Gap. It lists all boards being tracked by the Stak-n-Gap system. A button for clearing the status is also available.



Opens the Options window (see page 40).



Opens Vekta Rescue in the web browser.

Multi-view Tabbed Pane

The multi-view tabbed pane is available on the middle left of the main window. It offers three different views to browse, manage and cut members. An additional view is present if the file contains layout information.

Member List tab

Job	Truss	Member	Length	Type	Done	Total	Bin	Material
J-01A-T	T6	EV1	720	TC	0	1	5	90x45 DDP MSG8 H1.2
J-01A-T	T6	EV2	704	TC	0	1	5	90x45 DDP MSG8 H1.2
J-01A-T	T6	T1	1110	TC	0	1	5	90x45 DDP MSG8 H1.2
J-01A-T	T6	T2	1122	TC	1	1	5	90x45 DDP MSG8 H1.2
J-01A-T	T6	W2	1215	WEB	1	1	5	90x45 DDP MSG8 H1.2
J-01A-T	T6	WCL2	973	WEB	1	1	5	90x45 DDP MSG8 H1.2
J-01A-T	T6	WCR2	1055	WEB	1	1	5	90x45 DDP MSG8 H1.2
J-01A-T	T7	B1	3000	BC	2	2	5	90x45 DDP MSG8 H1.2
J-01A-T	T7	B2	2320	BC	2	2	5	90x45 DDP MSG8 H1.2
J-01A-T	T7	T1	3816	TC	2	2	5	90x45 DDP MSG8 H1.2
J-01A-T	T7	T2	3816	TC	2	2	5	90x45 DDP MSG8 H1.2
J-01A-T	T7	W1	832	WEB	0	2	5	90x45 DDP MSG8 H1.2
J-01A-T	T7	W2	1699	WEB	0	2	5	90x45 DDP MSG8 H1.2
J-01A-T	T7	W3	1699	WEB	0	2	5	90x45 DDP MSG8 H1.2
J-01A-T	T7	W4	832	WEB	0	2	5	90x45 DDP MSG8 H1.2
J-01A-T	T7A	B1	3000	BC	0	1	5	90x45 DDP MSG8 H1.2
J-01A-T	T7A	B2	2320	BC	0	1	5	90x45 DDP MSG8 H1.2
J-01A-T	T7A	T1	3123	TC	0	1	5	90x45 DDP MSG8 H1.2
J-01A-T	T7A	T2	3816	TC	0	1	5	90x45 DDP MSG8 H1.2
J-01A-T	T7A	W1	832	WEB	0	1	5	90x45 DDP MSG8 H1.2
J-01A-T	T7A	W2	1699	WEB	0	1	5	90x45 DDP MSG8 H1.2
J-01A-T	T7A	W3	1699	WEB	0	1	5	90x45 DDP MSG8 H1.2

The Member List tab shows all the members included in the file in their non-optimised state.



Note: the orange-highlighted lines identify the members that are impossible to cut due to an out-of-range angle.

Sort members



Note: Sorting the members in the Member List tab will override the pre-optimisation order (Pre-Optimisation list) defined in the Sorting tab of the Options window (see page 47). To restore the pre-optimisation order, close and reopen the file.

You can sort the members by clicking any column header:

- Click a column header to sort the members in ascending order based on that column.
- Click the same column header again to sort the members in descending order.

The Member List tab contains the following columns:

- › **Job:** designation of the job the member belongs to
- › **Truss:** designation of the truss the member is part of
- › **Member:** designation of the member within the truss
- › **Length:** overall length of the member



Note: Any red value in this column means that an automatic length adjustment has been applied to the member. For more details, see *Automatic Length Adjustment* on page 102.

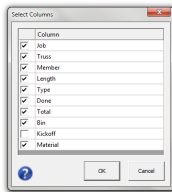
- › **Type:** type of the member

- › **Done:** number of members already cut
- › **Total:** total number of members to be cut
- › **Bin:** bunk the timber is located in if an automated timber retrieval system is installed
- › **Kickoff:** kickoff location the member will be sent to (set in the job file or overridden by the kickoff rules if any)

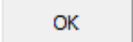


Note: A value of "-1" means that the kickoff location is undefined.

- › **Material:** description of the material assigned to the member




To hide or show specific columns, right-click any column header and select **Select Columns...** from the context menu. You can then check the columns you want to show and uncheck the ones you want to hide.

Click  to confirm.


Select members

To select a single member, simply left-click on the desired member. This will highlight the line in blue.




To select multiple members, do the following:


1. Left-click on any member you wish to select.
2. Hold down the  key and left-click on any other members you wish to select.

To select a block of members, do the following:

1. Left-click on the first member of the block you wish to select.
2. Hold down the  key and left-click on the last member of the block. Both clicked members and all the members in between will be selected. The entire block will be highlighted in blue.

To select multiple blocks of members, do the following:

1. Select the first block as per the above procedure.
2. Hold down the  key and left-click on the first member of the next block you wish to select.
3. Hold down the  and  keys together and left-click on the last member of that block.
4. Repeat steps 2 & 3 for any other blocks you wish to select.

To exclude a member from any selection, hold down the  key and left-click on the member you wish to exclude.



Note: if a single member is selected, it will remain selected when switching to another tab (if present in the other tab).

Available functions

When the **Member List** tab is active, all the functions of the Toolbar are available (see page 15).

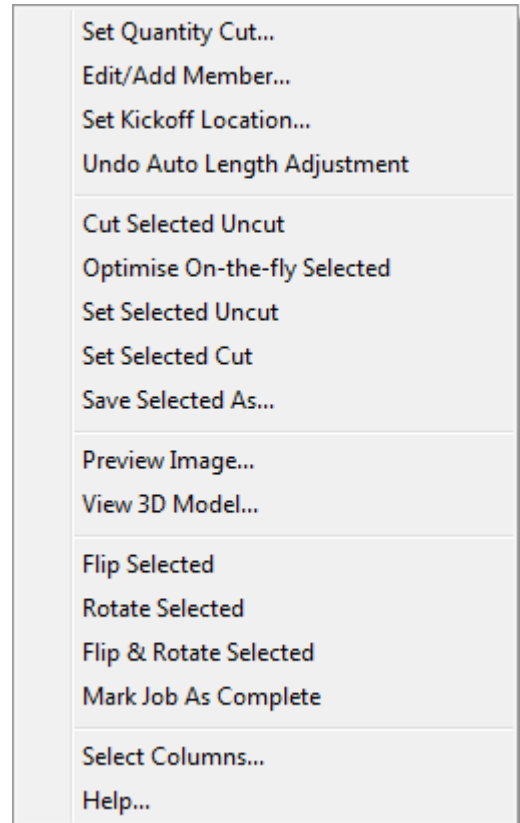
You can right-click on the selected member(s) to display a context menu. It includes shortcuts to some functions of the Toolbar, and gives access to the following additional actions:

- **Set Quantity Cut...:** opens the Edit Quantity Cut window to change the number of members already cut (Done column) out of the total quantity required (Total column).
- **Edit/Add Member...:** opens the Complete Member Editing window to edit the selected member (see page 80), or create a new member in the list (see page 81).
- **Set Kickoff Location...:** opens a keypad that lets you choose another kickoff location for the selected member(s).



Note: this will override any value set in the job file or by the kickoff rules.

- **Reset Kickoff Location:** restore the kickoff location to its initial value.
- **Undo Auto Length Adjustment:** resets the length of the member to its nominal value when an automatic length adjustment has been applied (for more details, see *Automatic Length Adjustment* on page 102).
- **Save Selected As...:** opens the Save As... window to save the selected member(s) as a new file (for more details, see *Save a file* on page 12).
- **Preview Image...:** opens the Print Preview window (see page 73).
- **View 3D Model...:** opens the 3D Model window (see page 86).
- **Flip Selected:** turns the selected member(s) over width-wise.
- **Rotate Selected:** turns the selected member(s) over length-wise.
- **Flip & Rotate Selected:** rotates the selected member(s) by 180° in the horizontal plane.
- **Mark Job As Complete:** flags the job as complete, which will send a web notification (see page 53) and/or close and auto-archive the file (see page 42).

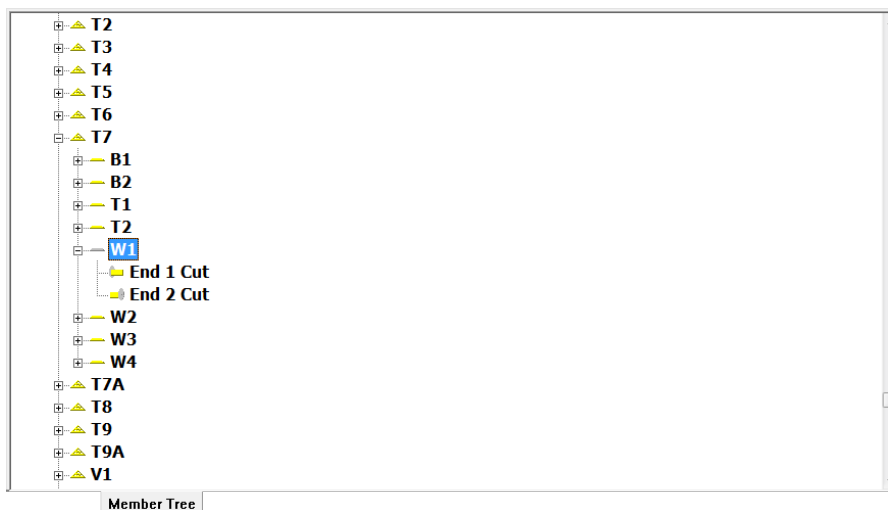


- › **Select Columns...:** opens the Select Columns window that lets you choose the columns to display.



Note: Most of these actions can be performed on either a single member or a multiple selection. **Edit Member**, **Preview Image**, **3D Model** and **Undo Auto Length Adjustment** can only be performed on a single member.

Member Tree tab



The Member Tree tab makes it easy to locate a specific member within the file. The tree view shows a hierarchical list of the following elements:

- job
- truss
- member
- cut (different pictogram for each type of cut)

Double-click an element (cuts excepted) or click the button next to it to expand its contents. Double-click the same element or click the button next to it to collapse its contents.

Any one of the elements present in the list can be selected at a time.



Note: When a cut is selected, it is shown in red on the Member Diagram (see page 29).

Any member selected in this tab will remain selected when switching to another tab (if present in the other tab).

When the Member Tree tab is active, only the **Optimise All** and **Cut Selected Uncut** functions of the Toolbar are available (see page 15).

Click the Cut Selected Uncut button on the Toolbar to start cutting the entire selected element (job, truss or member). This feature is of particular use when a specific element needs to be recut.

Optimised tab

*	Stack	Material	Length	Bin	Job	Truss	Member	Type	Length
	45/45	90x45 DDP MSG8 H1.2	4800	5	J-01A-T	T13A	W1	WEB	1022
					J-01A-T	T13A	W1	WEB	1022
					J-01A-T	T13A	T1	TC	3225
					J-01A-T	T13A	T1	TC	3225
*		90x45 DDP MSG8 H1.2	4800	5	J-01A-T	T15	W1	WEB	946
*					J-01A-T	T14	W1	WEB	946
*					J-01A-T	T14	T1	TC	2700
*		90x45 DDP MSG8 H1.2	4800	5	J-01A-T	T17	W1	WEB	1899
*					J-01A-T	T15	T1	TC	2700
		90x45 DDP MSG8 H1.2	4800	5	J-01A-T	T2	T2	TC	924
					J-01A-T	T6	T1	TC	1110
					J-01A-T	T1A	T1	TC	2413
*		90x45 DDP MSG8 H1.2	4800	5	J-01A-T	T2	W1	WEB	1135
*					J-01A-T	T2	T1	TC	2882
*	45/45	90x45 DDP MSG8 H1.2	4800	5	J-01A-T	T7	W1	WEB	832
*					J-01A-T	T7	W1	WEB	832
*					J-01A-T	T3	T1	TC	3817
*					J-01A-T	T3	T1	TC	3817
	45/45	90x45 DDP MSG8 H1.2	4800	5	J-01A-T	T7A	W1	WEB	832
					J-01A-T	T7	W4	WEB	832
					J-01A-T	T4	T1	TC	3817
					J-01A-T	T3	T2	TC	3817

The Optimised tab shows the members that have been optimised. The timbers are listed in the cutting order and each timber contains the member(s) it will be cut into.



Notes:

- The orange-highlighted lines identify the members that are impossible to cut due to an out-of-range angle.
- The members displayed in light grey are either at the top of a vertical stack, or away from the fenceline in the case of a horizontal stack.
- Already cut members are tagged with an asterisk (star) in the left-most column.

The Optimised tab contains the following columns:

- › **Stack:** indication on how timbers are stacked (If empty, no timbers are stacked.)

EXAMPLES


"2xW" means that two timbers are stacked side by side.

"45/45" means that two 45-mm-thick timbers are stacked one on top of the other.


"35/45" means that a 45-mm-thick timber is stacked above a 35-mm-thick timber.

- › **Material:** description of the material assigned to the member(s)
- › **Length:** length of the timber
- › **Bin:** bunk the timber is located in if an automated timber retrieval system is installed


- › **Job:** designation of the job the member belongs to
- › **Truss:** designation of the truss the member is part of
- › **Member:** designation of the member within the truss
- › **Type:** type of the member
- › **Length:** overall length of the member

 **Note:** Any red value in this column means that an automatic length adjustment has been applied to the member. For more details, see *Automatic Length Adjustment* on page 102.


- › **Kickoff:** kickoff location the member will be sent to (set in the job file or overridden by the kickoff rules if any)

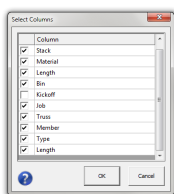
 **Note:** A value of "-1" means that the kickoff location is undefined.

- › **Waste:** length of waste in the timber

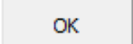
 **Note:** any red value in this column means that the waste length is equal to or greater than the minimum reusable waste length that can be set in the **Offcuts** tab of the Options window.

- › **Left:** number of alike timbers left to be fed

 **Note:** alike timbers are adjacent to each other in the list and share the same material description, material dimensions and stacking configuration.



To hide or show specific columns, right-click any column header and select **Select Columns...** from the context menu. You can then check the columns you want to show and uncheck the ones you want to hide.

Click  to confirm.


Select members

To select a single member, simply left-click on the desired member. This will highlight the line in blue.




To select multiple members, do the following:


1. Left-click on any member you wish to select.
2. Hold down the **Control** key and left-click on any other members you wish to select.

To select a block of members, do the following:

1. Left-click on the first member of the block you wish to select.
2. Hold down the  key and left-click on the last member of the block. Both clicked members and all the members in between will be selected. The entire block will be highlighted in blue.

To select multiple blocks of members, do the following:

1. Select the first block as per the above procedure.
2. Hold down the  key and left-click on the first member of the next block you wish to select.
3. Hold down the  and  keys together and left-click on the last member of that block.
4. Repeat steps 2 & 3 for any other blocks you wish to select.

To exclude a member from any selection, hold down the  key and left-click on the member you wish to exclude.



Note: if a single member is selected, it will remain selected when switching to another tab (if present in the other tab).

Available functions

When the Optimised tab is active, all the functions of the Toolbar, except Optimise Selected and Optimise On-the-fly Selected, are available (see page 15).

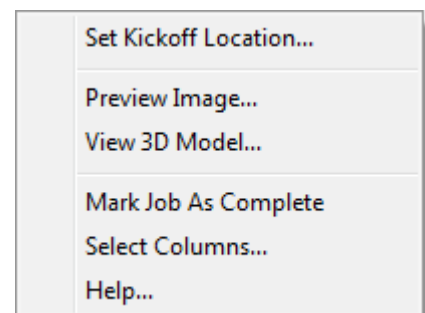
You can right-click on the selected member(s) to display a context menu. It gives access to the following actions:

- › **Set Kickoff Location...:** opens a keypad that lets you choose another kickoff location for the selected member(s).

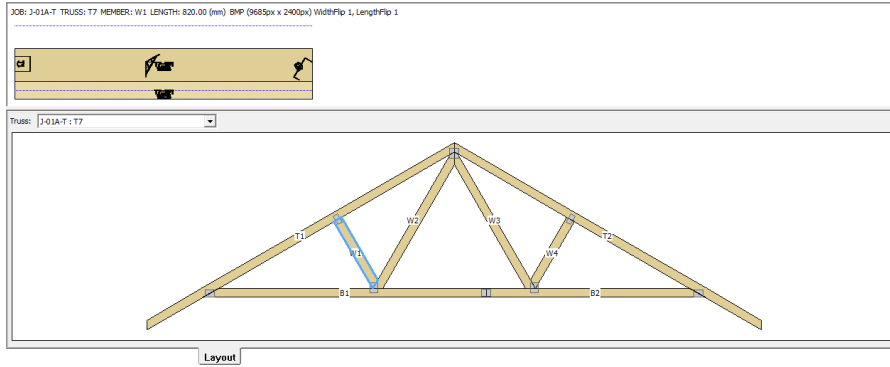


Note: this will override any value set in the job file or by the kickoff rules.

- › **Reset Kickoff Location:** restore the kickoff location to its initial value.
- › **Preview Image...:** opens the Print Preview window (see page 73).
- › **View 3D Model...:** opens the 3D Model window (see page 86).
- › **Mark Job As Complete:** flags the job as complete, which will send a web notification (see page 53) and/or close and auto-archive the file (see page 42).
- › **Select Columns...:** opens the Select Columns window that lets you choose the columns to display.



Layout tab



Note: this feature is only supported with the following file formats:

- Simple files version 2 (*.smp2)
- MiTek files (*.mme), if a relevant .mps file is present in the same folder
- Blade XML files (*.xml)

The Layout tab shows an overview of the truss that contains the last selected member. A Print Preview of the selected member is displayed in the top part of the window instead of the member diagram.

You can select another member on the truss, or switch to any other truss layout included in the file using the drop-down list in the top left corner.



Note: any member selected in this tab will remain selected when switching to another tab (if present in the other tab).

The following elements can be present on the truss layout:



Member



Selected member



Nail plate



Member included in the truss but not present in the file



Invalid member

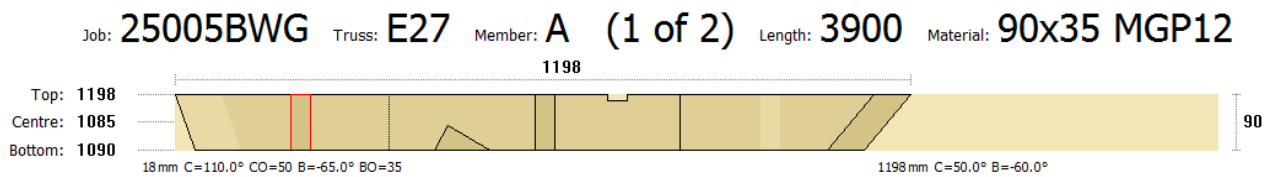


Opening (doorway, window...)

When the **Layout** tab is active, only the **Optimise All** function of the **Toolbar** is available (see page 15).

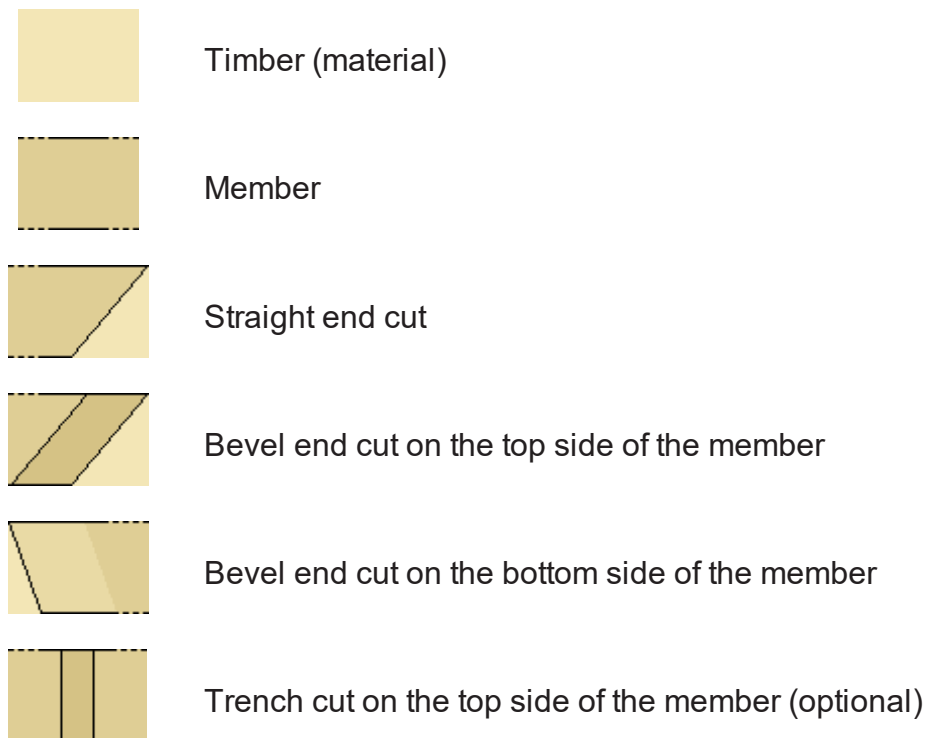
Member Diagram

The member diagram is available at the top of the main window. It gives an accurate description and top-view representation of the member currently being cut or selected in the active tab (**Member List**, **Member Tree** or **Optimised**). The diagram also shows in red the cut either in progress or currently selected in the **Member Tree** tab. For more details about the different tabs, see *Multi-view Tabbed Pane* on page 20.



Colour legend and types of cuts

The top-view representation shows the different cuts performed on the timber to obtain the desired member. The following colours and types of cuts can be present on the diagram:





Trench cut on the bottom side of the member (optional)



Note: Trench cuts can be performed on the top side only. The member needs to be flipped over for this cut to be performed.



Side trench cut (optional)



Undercut on the top side of the member



Note: Undercuts can be performed on the bottom side only. The member needs to be flipped over for this cut to be performed.



Undercut on the bottom side of the member



Taper cut



Birdsmouth cut



Cut in progress or selected

Member details

The member diagram includes the following details:

- › **Job:** designation of the job the member belongs to
- › **Truss:** designation of the truss the member is part of
- › **Member:** designation of the member within the truss
- › **(_ of _):** member number out of the total quantity of the same member
- › **Length** (in mm): overall length of the member in the **Member List** and **Member Tree** tabs, or length of the timber in the **Optimised** tab



Note: A red value means that an automatic length adjustment has been applied to the member. For more details, see *Automatic Length Adjustment* on page 102.

- › **Material:** description of the material assigned to the member
- › **Top** (in mm): length of the edge facing the back of the machine

- › **Centre** (in mm): length through the centre line of the member
- › **Bottom** (in mm): length of the edge facing the door
- › **1198** (in mm): overall length of the member



Note: A red value means that an automatic length adjustment has been applied to the member. The nominal length is indicated in parentheses. For more details, see *Automatic Length Adjustment* on page 102.

- › **90** (in mm): overall width of the member

Cut parameters

The following parameters can be visible under the corresponding end cut:

- › **0 mm** (X-axis): location of the cut along the timber from the right end of the member with the negative values to the left (if the infeed direction is from the left to the right)
- › **C** (C-axis, in degrees): angle of the cut measured counter-clockwise relative to the X-axis

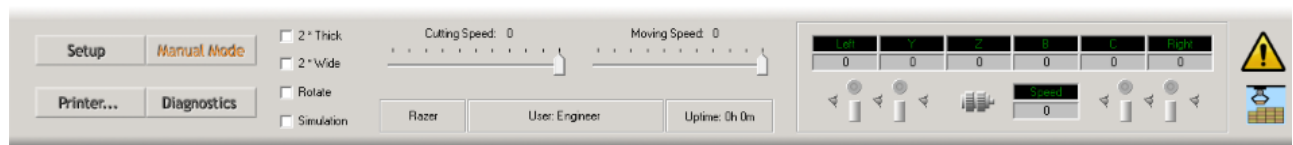
EXAMPLE

A value of "90°" or "-90°" will result in a square cut (if there is no bevel angle).

- › **CO** (Y-axis, in mm): horizontal offset of the cut angle from the edge facing the back of the machine with the positive values towards the door
- › **B** (B-axis, in degrees): bevel angle measured clockwise from the vertical
- › **BO** (Z-axis, in mm): vertical offset of the bevel angle from the bottom side of the member with the positive values upwards

Control Bar

The control bar is available at the bottom of the main window. It is broken into various sections, each of which performs different functions. It can be used to operate and adjust the saw manually, set up the printer, diagnose faults or monitor the functioning.



Command buttons

The command buttons on the left of the control bar are used to open additional windows.

Setup

Opens the Setup window (see page 97).



Note: This feature is available to Engineer access level only.

Manual Mode

Opens the Manual Mode window (see page 59).

Printer...

Opens the Printer Setup window (see page 64).

Diagnostics

Opens the Diagnostics window (see page 99).

Saw loading options

These checkboxes offer additional cutting options during production.



Note: these options are overrides and will not change the quantities cut of the selected members (i.e. if there are two of the same members to cut, enabling 2* Thick will only count as cutting one member).

- › **2* Thick:** indicates to the saw that two pieces of timber are stacked one on top of the other.
- › **2* Wide:** indicates to the saw that two pieces of timber are stacked side by side.
- › **Rotate:** indicates to the saw that the stick is rotated 90° from the position initially set in the file (flat or on its edge).



Note: this may be useful when the saw is not able to perform a cut in the initially set position.

- › **Simulation:** simulates the cutting functions when Simple is unable to communicate with the saw.



Note: this option is hidden when communication with the saw is present.

Speed sliders

These sliders will dynamically change the speed of the saw's feed rates while cutting and can be changed at any time:

- › **Cutting Speed:** alters the speed of the cutting action while in a cut (i.e. the speed at which the blade is moved through the timber, not the actual speed of the blade itself).

- › **Moving Speed:** alters the speed of the timber when moving through the saw from one cut position to another.

Monitoring panel

The monitoring panel on the right of the control bar gives the current position and status of any particular axis or feeder, as well as the status of the feeder sensors, clamp rollers and saw blade.

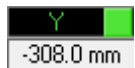


Note: the colour of the indicator light gives the current status as follows:

- Normal operation (ready and active)
- Not homed or on software limits
- Presence of a fault (Amp Fault or Urgent FE error)
- Not initialised



Gives the current position and status of the left feeder.



Gives the current position and status of the Y-axis.



Gives the current position and status of the Z-axis.



Gives the current position and status of the B-axis.



Gives the current position and status of the C-axis.



Gives the current position and status of the right feeder.



Indicates that the corresponding **top clamp roller is in the idle position** (away from the timber).



Indicates that the corresponding **top clamp roller is in the actuated position** (clamped against the timber).



Indicates that the corresponding **feeder sensor is obstructed** (timber is detected).



Indicates that the corresponding **feeder sensor is clear** (timber is not detected).



Indicates that the corresponding **side clamp roller is in the idle position** (away from the timber).



Indicates that the corresponding **side clamp roller is in the actuated position** (clamped against the timber).



Indicates that the **saw blade is off**.



Indicates that the **saw blade is on**.



Gives the current speed of the saw blade (in rpm).

Machine Name

The machine name is displayed just below the cutting speed slider. This can help identify the machine during remote access.



Note: the machine name can be changed in the **General** tab of the Options window (see page 41).

Message bar

The message bar is located just below the speed sliders. It shows the login name of the current user, messages relating to any function currently running, as well as warning messages.

Uptime counter

The uptime counter is located just below the speed sliders. It indicates how long the saw has actually been cutting since midnight.

Error notification

An error notification icon can be displayed at the right end of the control bar.

The icon indicates the following:



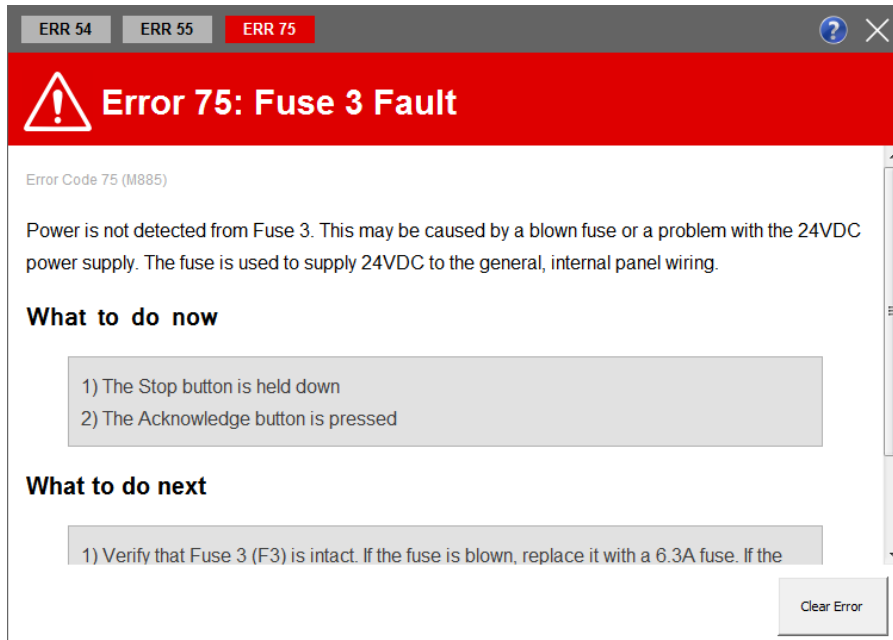
No error is present.

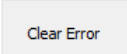


One or more errors occurred and attention is required.



Note: Critical errors and errors that require immediate operator action will force the Error Notification window to pop up (see image below). To show information about other errors or to reopen the window, you can click the flashing icon at any time.



This window gives a description of the error. If there are multiple errors pending, you can switch between them by clicking the tabs at the top of the window. The "What to do now" section has instructions for immediate action to continue cutting. The "What to do next" section contains instructions to fault-find the issue if it will not clear. Some errors can simply be dismissed by clicking .



Note: a red header indicates an issue with the Razer saw, while a blue header indicates an error with the Packfeeder 2.

Packfeeder 2 status

If a Packfeeder 2 is installed, a dedicated icon will be displayed at the right end of the control bar.



Note: "Packfeeder 2" must be selected as **Bunk Feeder** in the **General** tab of the Options window (see page 41).

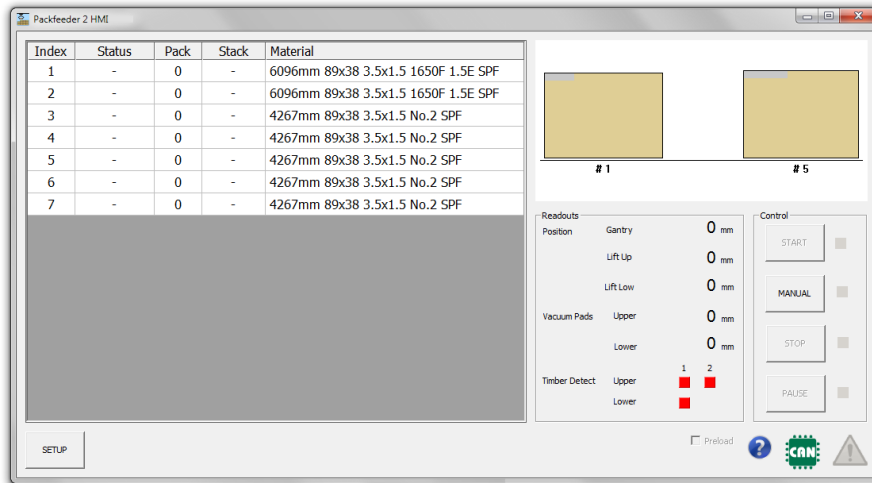
The icon gives the current status as follows:



The connection to the Packfeeder 2 is active. You can click the icon to open the Packfeeder 2 interface (see image below).



The connection to the Packfeeder 2 has not been initiated or has failed. To troubleshoot the issue, check that CAN-Do is showing in the Windows taskbar notification area and running properly. If this does not help, try restarting Simple.



WoodRunner status (third-party product)

If a WoodRunner is installed, a dedicated icon will be displayed at the right end of the control bar.



Note: "WoodRunner" must be selected as **Bunk Feeder** in the **General** tab of the Options window (see page 41).

The icon gives the current status as follows:



The connection to the WoodRunner is active.

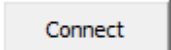


The connection to the WoodRunner is disabled. To enable it, do the following:

1. Click the icon to open the WoodRunner interface (see image on the facing page).
2. Check Enabled.



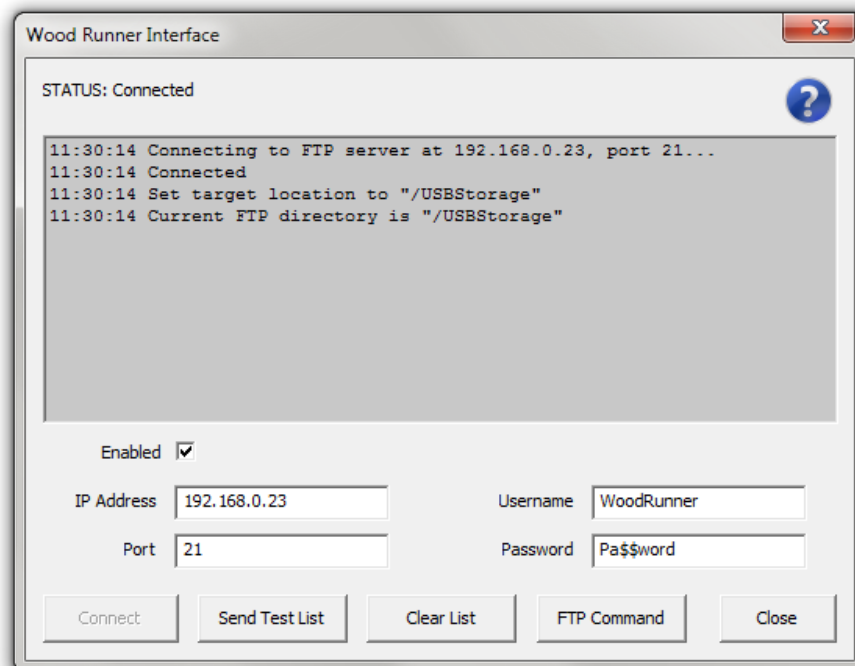
The connection to the WoodRunner has not been initiated or has failed. To solve the issue, do the following:

1. Click the icon to open the WoodRunner interface (see image below).
2. Check the connection details.
3. Click  .



CAUTION

WoodRunner connection settings must not be altered unless communication issues have been diagnosed.



MATERIALS LIST

The Materials List window shows all the materials required to cut the members based on the current optimisation. The window includes two separate lists labelled **Quantity Summary** and **Loading Order**. Basic metrics about the current optimisation are displayed at the right of the window (for more details about those metrics, see *Results file* on page 58).

Quantity Summary						
Material	Length	Width	Thickness	Bin	Quantity	
70x45 DDP MSG8 H1.2	1800	70	45	6	17	
190x45 DDP MSG8 H1.2	3600	190	45	3	17	
290x45 DDP MSG8 H1.2	3900	290	45	8	23	
140x45 DDP MSG8 H1.2	4500	140	45	1	14	
90x45 DDP MSG10 H1.2	4500	90	45	7	10	
190x45 DDP MSG10 H1.2	4800	190	45	2	1	

Loading Order						
Pos	Material	Length	Width	Thickness	Quantity	Stack
	70x45 DDP MSG8 H1.2	1800	70	45	1 (2)	2xH
	70x45 DDP MSG8 H1.2	1800	70	45	1	
	70x45 DDP MSG8 H1.2	1800	70	45	1 (2)	2xH
	70x45 DDP MSG8 H1.2	1800	70	45	1	
	70x45 DDP MSG8 H1.2	1800	70	45	3 (6)	2xH
BOT	70x35 DDP MSG8 H1.2	1800	70	35	1 (2)	2xH
TOP	70x45 DDP MSG8 H1.2					
	190x45 DDP MSG8 H1.2	3600	190	45	17	
	290x45 DDP MSG8 H1.2	3900	290	45	23	
	140x45 DDP MSG8 H1.2	4500	140	45	14	
	90x45 DDP MSG10 H1.2	4500	90	45	1 (2)	2xH
	90x45 DDP MSG10 H1.2	4500	90	45	3	
	90x45 DDP MSG10 H1.2	4500	90	45	2 (4)	2xH
	190x45 DDP MSG10 H1.2	4800	190	45	1	
	90x45 DDP MSG8 H1.2	4500	90	45	1	

Metrics	
Number of Timber Lengths	456
Number of Members	1022
Number of Stacked Members	224
% of Stacked Members	21.92%
Total Material Length	2102.7m
Total Usable Length	1984.22m
Total Member Length	1891.33m
Total Offcut Length	173.04m
Total Waste	118.48m
Total Waste To Bin	37.93m
% of Waste To Bin	1.80%
Total Reusable Waste	80.54m
% of Reusable Waste	3.83%
Material Cost	\$28177.40

Picklist webpage

The web-based Picklist page displays the **Quantity Summary** and **Loading Order** information.

To go to the Picklist webpage, select **Site Map...** from the **Tools** drop-down menu in the **Simple** menu bar, then click [Picklist](#).

Alternatively, you can enter "localhost:8889/picklist" in the address bar of your local browser.




Notes:

- The webserver can be accessed remotely by replacing "localhost" with the IP address or local hostname of the machine that runs Simple. Your network and firewall configuration may need to be adjusted to allow remote access.
- The webserver port (8889 by default) can be changed in the **General** tab of the **Options** window (see page 41).

Access in Simple

To open the Materials List window, do one of the following in Simple once a file is open:

- ▶ Click  on the toolbar.
- ▶ Select **Materials List** from the **View** drop-down menu.

Quantity Summary

The Quantity Summary list gives the dimensions and amount of each type of timber that is required. This list is used by the pickers when collecting the timbers from the yard.



Note: the Bin column indicates in which bunk the timber is located if an automated timber retrieval system is installed.

Loading Order

The Loading Order list gives the exact order in which the timbers should be loaded into the saw.

This list may also show a "2xW" or "2xH" in the right-most column to indicate that certain pieces of timber are cut in a stacked formation. "2xW" means that two pieces of timber are stacked side by side (horizontally). "2xH" means that two pieces of timber are stacked one on top of the other (vertically). In either case, the real amount of timbers needed is indicated in parentheses next to the primary quantity.



Note: Two consecutive lines of the same colour (white or purple) indicate a stack of timbers with two different thicknesses or grades. The second line indicates the timber that is either at the top of a vertical stack, or away from the fenceline in the case of a horizontal stack. The left-most column gives the position of the timber in the stack as follows: TOP, BOT (bottom), F (against the fenceline) or NF (away from the fenceline).

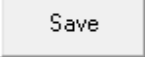
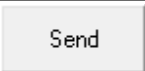
EXAMPLE

	70x45 DDP MSG8 H1.2	1800	70	45	3 (6)	2xW
BOT	70x35 DDP MSG8 H1.2	1800	70	35	2 (4)	2xH
TOP	70x45 DDP MSG8 H1.2					
BOT	70x45 DDP MSG8 H1.2	1800	70	45	1 (2)	2xH
TOP	70x35 DDP MSG8 H1.2					
F	70x45 DDP MSG8 H1.2	1800	70	45	1 (2)	2xW
NF	70x45 DDP MSG8 H3.1					

The above list gives the following loading order:

- three consecutive horizontal stacks (six identical timbers in total)
- two consecutive vertical stacks with one 35-mm-thick timber at the bottom and one 45-mm-thick timber at the top (four timbers in total)
- one vertical stack with a 45-mm-thick timber at the bottom and a 35-mm-thick timber at the top
- one horizontal stack with an "H1.2" timber against the fenceline and an "H3.1" timber away from the fenceline

A picklist determined by the loading order can be generated and used as follows:

- › Click  to export the picklist as an XML or CSV file.
- › Click  to make the picklist available for the Linear Pickline to fetch (if installed).

OPTIONS




Note: This feature is available to Supervisor and Engineer access levels only.

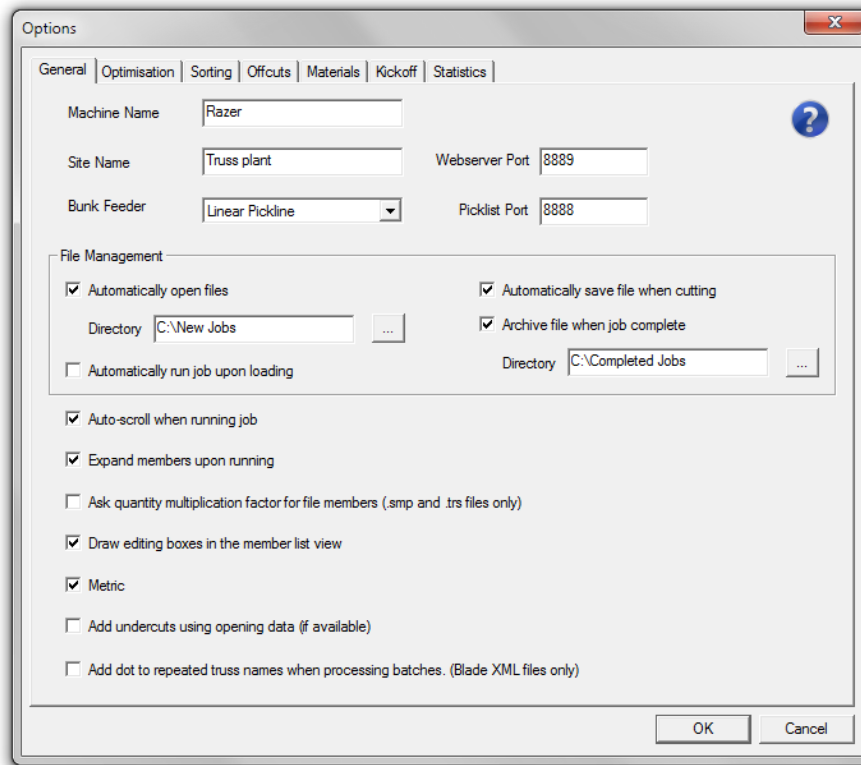
The Options window makes it possible to customise the interface and operation of the saw.

Access

To open the Options window, do one of the following in Simple:

- ▶ Click  on the toolbar.
- ▶ Once a file is open, select Options... from the Tools drop-down menu in the Simple menu bar.

General



The **General** tab relates to the overall running of the saw.

- › **Machine Name:** specifies the name of the machine to be displayed on the Control Bar (see page 34) and on the webserver pages.
- › **Site Name:** specifies the name of the site to be displayed on the webserver pages.
- › **Webserver Port:** specifies the local port number used to access the webserver pages.



Notes:

- To open the site map of the webserver, select **Site Map...** from the **Tools** drop-down menu in the Simple menu bar. Alternatively, you can enter "localhost:8889" in the address bar of your local browser (replace 8889 with any other webserver port specified here).
 - The webserver can be accessed remotely by replacing "localhost" with the IP address or local hostname of the machine that runs Simple. Your network and firewall configuration may need to be adjusted to allow remote access.
- › **Bunk Feeder:** specifies whether an automated timber retrieval or feeding system is installed and which kind.



Note: when "Linear Pickline" is selected, the communication port used to fetch the picklist can be set in the **Picklist Port** field (see page 40).

- › **File Management:** relates to the automatic handling of job files.
 - › **Automatically open files:** automatically opens new job files placed in the specified folder.



Notes:

- A maximum of five files can be opened at any one time.
- When combined with the Auto-run feature (next option), the job file will automatically close when cutting finishes.
- It can be combined with Auto-run and automatic Job Sequencing (see page 19) to fully automate job cutting.
- This feature is disabled if the Razer is running on PMAC firmware version 50185 or lower.

- › **Automatically run job upon loading:** begins the cutting sequence immediately after a job file has loaded.
- › **Automatically save file when cutting:** saves the file automatically when the job's state changes (e.g. member cut).
- › **Archive file when job complete:** automatically closes and moves the job file to the specified folder once complete (i.e. all the members in the job have been marked as cut).
- › **Auto-scroll when running job:** synchronously scrolls through the list as the cutting sequence is taking place.
If unchecked, the display will stop scrolling back constantly to each new member being cut.
- › **Expand members upon running:** enables a zoom effect in the Member List or Optimised tab when a cutting sequence begins.
- › **Ask quantity multiplication factor for file members:** asks a value to multiply all members in the job file upon loading.



Note: this feature is for .smp and .trs files only.

- › **Draw editing boxes in the member list view:** draws boxes around the editable parameters on the Member Diagram (see page 29) when the Member List tab is active.
- › **Metric:** switches from imperial to metric units.



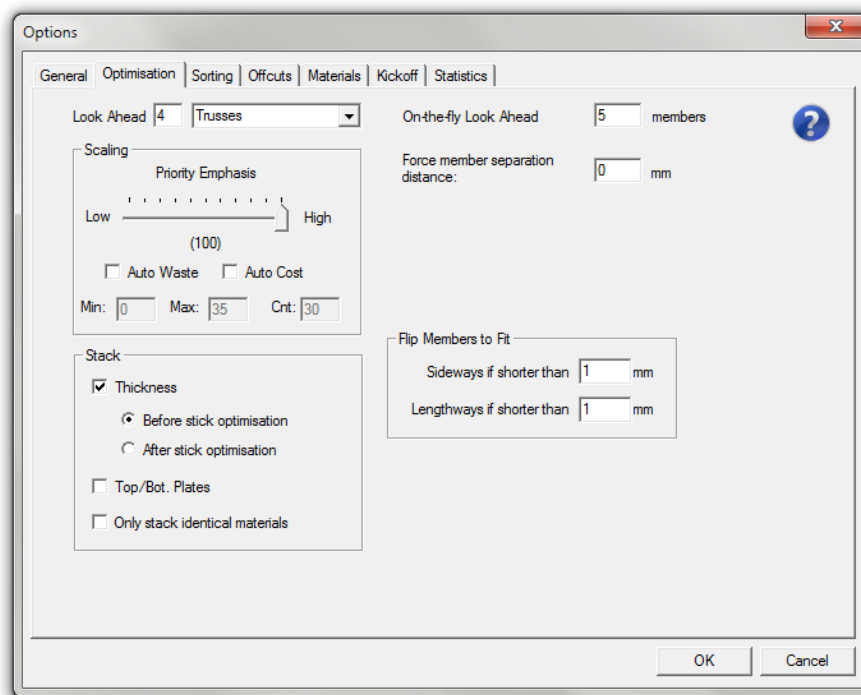
Note: you must restart Simple for the change to take effect.

- › **Add undercuts using opening data:** enables undercuts to be performed on members that are used for openings (e.g. window, door...) if relevant data are available in the file.
- › **Add dot to repeated truss names when processing batches (Blade XML files only):** rename each new instance of the same truss with an additional dot when found in a separate batch section of the Blade XML file.



Note: this will give each batch a unique truss name and keep the multiple instances of the truss from being optimised together, so they can be cut at different times and sent to different kickoff locations.

Optimisation



The **Optimisation** tab is used to configure the optimising algorithm according to the plant's requirements.

- › **Look Ahead:** specifies how far the optimising algorithm should look ahead in the file to find members to combine. The entity or field that will be looked at (most commonly truss) can be selected from the drop-down list.

EXAMPLE

If set to "0" and "Trusses" is selected from the drop-down list, the optimising algorithm will only consider the current truss to combine members into the stock length before selecting a new stick. If set to "1", the algorithm will consider the current truss and the next one in the list to combine members into the stock length before selecting a new stick and so on. Increasing the Look Ahead value will therefore improve the optimisation.

- » **Members:** This will look at the member name for combining members. If all members to be optimised have a quantity of "1" and the Look Ahead value is set to "0", only one member will be placed into each stock length. However if the Look Ahead value is increased to "2", there is a potential that there will be three members with different names combined into each stock length.
- » **Trusses:** This will look at the truss name for combining members. However it can only consider members of that truss and subsequent trusses with identical material. If there are five members with identical material in each truss and the Look Ahead value is set to "0", there is a potential that all five members of the same truss will be combined into one stock length (members of a different truss will be ignored for that stock length). If the Look Ahead value is increased to "1", there is a potential that members of two different trusses will be combined into the same stock length.
- » **Pieces of same material:** This will look at the material name for combining members. If all members to be optimised have a quantity of "1", they are all the same material and the Look Ahead value is set to "0", only one member will be placed into each stock length. However, if the Look Ahead value is increased to "2", there is a potential that there will be three members combined into each stock length.
- » **On-the-fly Look Ahead:** specifies how far the optimising algorithm should look ahead in the selection to find members to combine for an on-the-fly optimisation.
- » **Scaling:** relates to the priorities associated with any particular piece of timber.
 - » **Priority Emphasis:** specifies the weighting that is placed on the material priority as defined in the materials database. Changing this will affect what timber will be chosen based on the priority of the timber. If set to "100", the algorithm will always select the top priority timber where possible. If set to "0", the algorithm will always select the configuration with least amount of waste regardless of timber priority.



Note: the highest priority timber may also produce the least amount of waste.

- » **Auto Waste:** uses the most waste-efficient optimisation that is found according to the Min, Max and Cnt values defined below. With this enabled, the algorithm will be run many times with the different Priority Emphasis values as defined by Min, Max and Cnt. At the end of the process, the algorithm will choose the optimisation of highest Priority Emphasis that also produces the least amount of waste. This means you will always get the best waste reduction regardless, but it increases the chances of also getting the best timber utilisation possible based on preferred timber.
- » **Auto Cost:** uses the most cost-efficient optimisation that is found according to the Min, Max and Cnt values defined below. This works exactly the same as the Auto Waste feature, but will look at minimising total cost of the job rather than waste.



Note: to use this feature, all stock materials must have an entry greater than \$0 in the Cost column of the materials database, and this must be up-to-date to provide accurate results.

- » **Min:** lowest Priority Emphasis scale value (0 to 99) used by the algorithm while iterating through optimisation scenarios for the Auto Waste and Auto Cost features.
- » **Max:** highest Priority Emphasis scale value (1 to 100) used by the algorithm while iterating through optimisation scenarios for the Auto Waste and Auto Cost features.
- » **Cnt:** number of iterations performed by the algorithm in even increments between the Min and Max values while trying to find the best optimisation scenario for the Auto Waste and Auto Cost features.

EXAMPLE

If Min is set to "20", Max is set to "80" and Cnt is set to "4", the algorithm will be run four times at a priority emphasis of 20, 40, 60 and 80 of which the scenario with the lowest waste or cost will be selected.

- » **Force member separation distance:** specifies the length of timber that should be cut between two members when not sharing a cut.
- » **Stack:** enables the optimising algorithm to use stacked materials.
 - » **Thickness:** enables the materials to be stacked one on top of the other.
 - **Before stick optimisation:** attempts to create stacks of individual members and then to combine those stacks in a stack of timbers.
 - **After stick optimisation:** attempts to combine members in a timber and then to stack that timber with another one.



Note: The **Before stick optimisation** may cause more stacking and thus be more time-saving, but may also produce slightly more waste. On the contrary, the **After stick optimisation** may cause less stacking and thus be more time-consuming, but may also reduce waste.

- » **Top/Bot. Plates:** enables the top and bottom plates of a same frame to be stacked one on top of the other or cut side by side in case of trenching.
- » **Only stack identical materials:** prevents the optimising algorithm from stacking different materials (with a different description, width or thickness), whether it be one on top of the other or side by side.
- » **Mitred Members:** enables side-by-side stacking of mitred members where possible.
- » **Flip Members to Fit:** enables the members to be flipped either length-wise or width-wise based on the length of the individual member.



Notes:

- The flipping of members is performed to try and achieve an optimal solution by sharing cuts wherever possible. However, because some members (such as top and bottom chords) require the timber bow to coincide with the geometry of the member, it may be necessary to disable flipping.
- When the following values are changed, any open files need to be reloaded for the change to take effect.

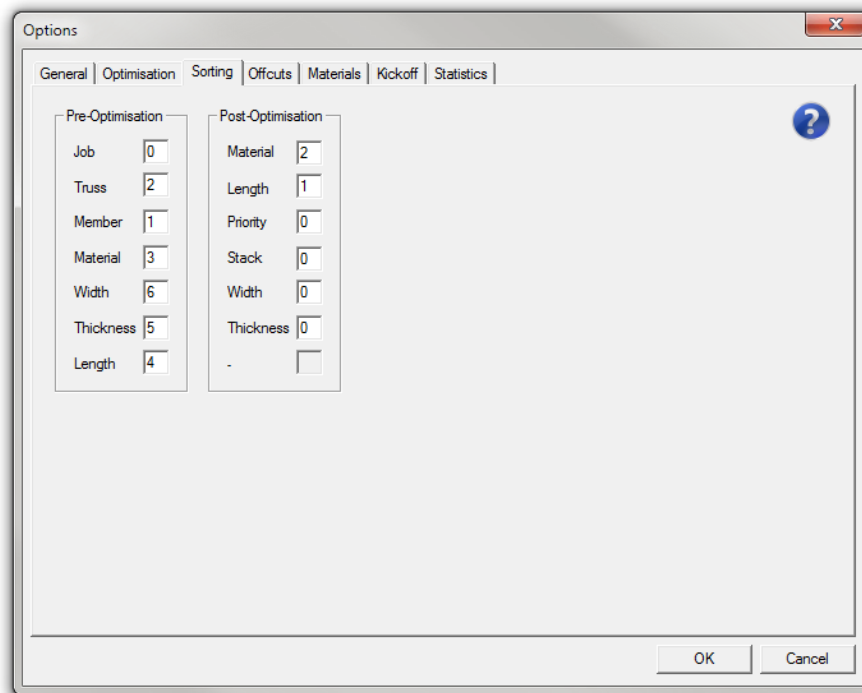
- » **Sideways if shorter than:** specifies the maximum length allowed to flip a member width-wise.



Note: if a member is flipped sideways, no Truss Markings will be printed on it (see page 67).

- » **Lengthways if shorter than:** specifies the maximum length allowed to flip a member length-wise.

Sorting



The Sorting tab contains two lists that are used to group certain members together based on different criteria before and after the optimisation.



Note: the following rules apply:

- The number "0" will not perform any sorting based on that field.
- A number different from "0" will define the position of that field in the sorting order ("1" being first, "2" being second, "3" being third and so on).
- A positive number will perform the sorting based on that field in ascending order (lowest first) and a negative number will perform the sorting in descending order (highest first).

➤ **Pre-Optimisation:** determines the order in which the members are fed into the optimising algorithm.

Using pre-optimisation sorting will have very different effects on waste reduction and cutting order depending on how it is set up. This does not help control the infeed side of the saw, only what members are more likely to be cut first.

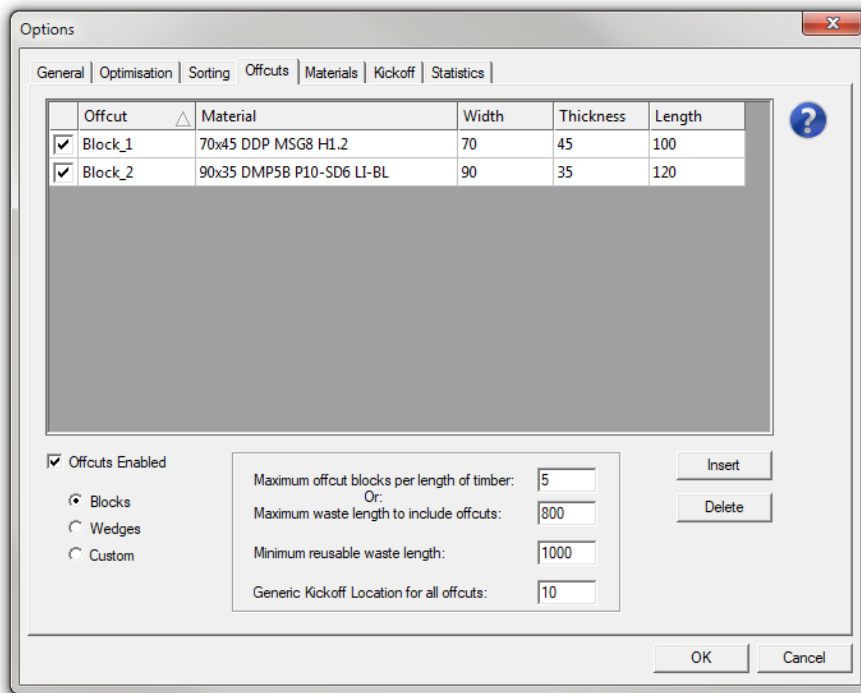
➤ **Post-Optimisation:** determines the order in which the optimised sticks are listed in the Optimised tab at the end of an optimisation.

Using post-optimisation sorting will not affect the waste in any way, it will simply rearrange what order the timber is loaded on the infeed, making the loading process simpler and more efficient. It will however affect the order in which members are cut.

EXAMPLE

In the Pre-Optimisation list, if the Truss field is set to "1", the Length field to "-2" and the other fields to "0", all members will be grouped by truss first and then sorted by length in descending order within each truss before being processed by the optimising algorithm.

Offcuts



The Offcuts tab is used to manage how the waste materials are automatically reused to produce useful pieces like wedges or wall noggins.

- › **Offcuts Enabled:** enables the Offcuts feature.



Note: if unchecked, the activation status of each offcut will have no effect.

- › **Maximum offcut blocks / wedge pairs / custom offcuts per length of timber:** specifies the maximum number of offcuts (or pairs of wedges) allowed per stick.
- › **Maximum waste length to include offcuts** (in mm): specifies the maximum length of the waste capable of getting offcuts inserted into the stick.



Note: If the waste associated with a stick is greater than either of these two previous values, no offcuts will be inserted and the waste will be spared for future use. To ignore one of these options, "0" should be entered into the associated field.

- › **Minimum reusable waste length:** specifies the minimum remaining waste length (after offcuts) required to insert a reusable block into the stick.
- › **Generic Kickoff Location for all offcuts:** specifies the kickoff location for all offcuts if a kickoff system is installed.
- › **Blocks / Wedges / Custom:** different types of offcuts to select from (squared-off noggins, wedges or custom members)



Note: if **Custom** is selected in the previous option, the table will show the custom members created in the Complete Member Editing window (see page 81).

- › **Insert** (table): adds a new row to the table with the type of offcuts selected in the previous option (**Blocks** or **Wedges** only).
- › **Delete** (table): removes the selected row from the table (**Blocks** or **Wedges** only).



Note: You can sort the offcuts by clicking any column header. Click a column header to sort the offcuts in ascending order based on that column. Click the same column header again to sort the offcuts in descending order.

The following properties can be defined in the table:

- › : activation status of the offcut (check to enable or uncheck to disable the offcut)
- › **Offcut:** name of the offcut (e.g. Block255)
- › **Material:** material to be used for the offcut



Notes:

- If a material is specified in this field, the description must be exactly the same as the one in the **Materials** tab, and the width and thickness specified in the next two columns must match this material.
- If this field is left blank, the optimising algorithm will use any material that matches the width and thickness specified in the next two columns.

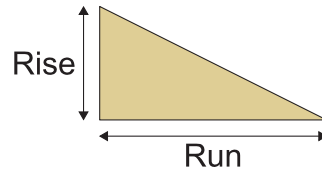
- › **Width** (in mm): width of the material to be used for the offcut
- › **Thickness** (in mm): thickness of the material to be used for the offcut
- › **Length** (in mm): length of the block (for blocks only)

» **Rise** (in mm): rise of the wedge (for wedges only)

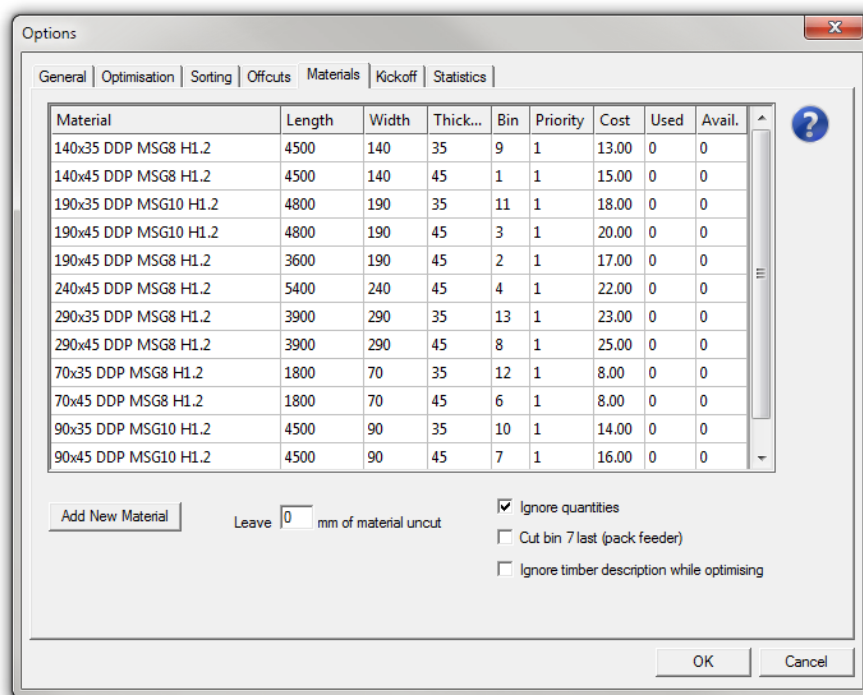


Note: this value should be equal to the width of the material.

» **Run** (in mm): run of the wedge (for wedges only)



Materials



The **Materials** tab provides access to the materials database that contains information relating to the timbers used in the plant.



Note: optimising can only occur with the timbers listed in the materials database.

- » **Leave mm of material uncut:** specifies the length of timber in each stick that is seen as unusable by the optimising algorithm.
- » **Ignore quantities:** disables the inventory control performed by the saw.

If unchecked, the saw will only use the materials with a number greater than "0" in the Avail. column and reduce this quantity by one each time a specific type of timber is cut.

- › **Cut bin 7 last (pack feeder)**: enables the materials from the last conveyor of the Packfeeder (optional) to be cut after the materials from the six bunks. This is to ensure all materials that require manual handling will be processed in a row.
- › **Ignore timber description while optimising**: enables the optimising algorithm to pick timbers based on their width and thickness only (the material description is not taken into account).
- › **Add new material (table)**: adds a new row to the materials table.



Note: You can sort the materials by clicking any column header. Click a column header to sort the materials in ascending order based on that column. Click the same column header again to sort the materials in descending order.

The following properties can be defined in the table:

- › **Material**: material description to be used to match with material descriptions in a file



Note: the description must be exactly the same as what is read in from a file.

- › **Length (in mm)**: length of the timber
- › **Width (in mm)**: width of the timber
- › **Thickness (in mm)**: thickness of the timber
- › **Bin**: bunk the timber is located in if an automated timber retrieval system is installed
- › **Priority**: priority each type of timber is to be used in



Notes:


- A priority of "0" disables the material.
- A material with a priority of "1" will try to be used first.
- It is not advisable to have two lengths of the same material with the same priority. The best practice is to start with the longest stock length at priority "1" and work in descending order to the shortest one.

- › **Cost**: cost per metre of the timber

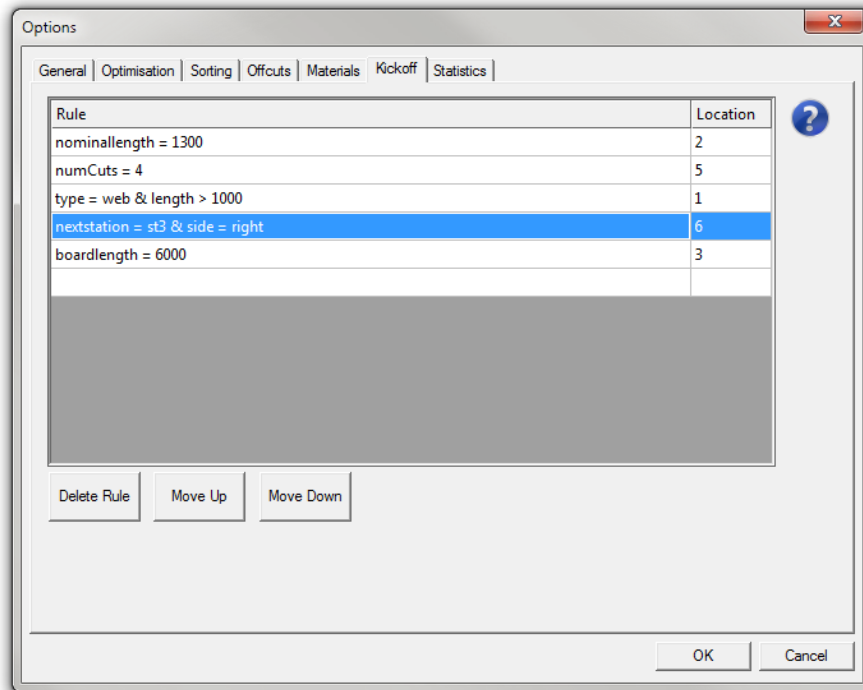


Note: optimising and statistics use this value.

- » **Used:** number of pieces of this particular timber that have been used to date
- » **Available:** number of pieces of this particular timber that are still available


 **Note:** this value is used for inventory control (if `Ignore quantities` is not enabled).

Kickoff

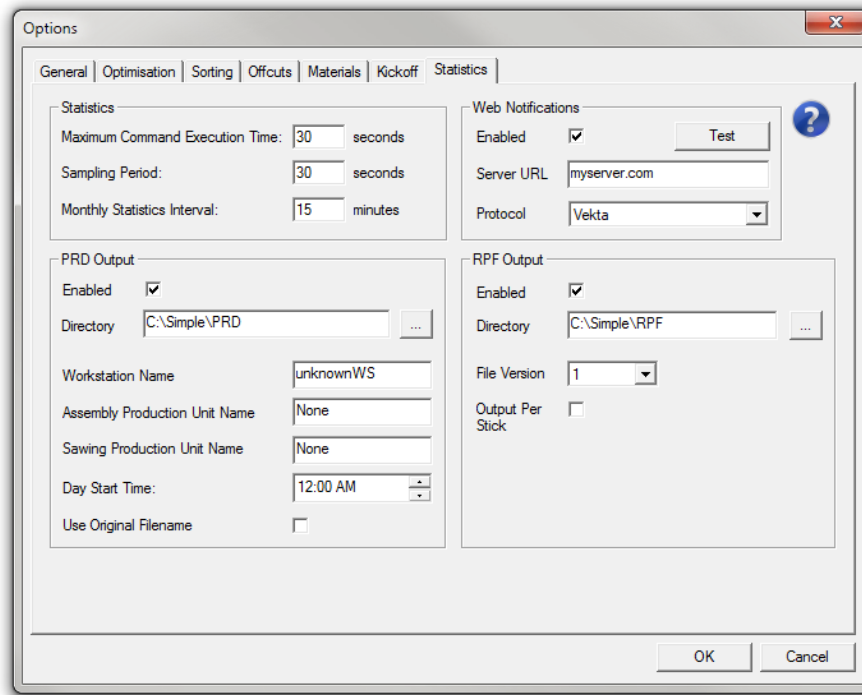


The `Kickoff` tab is used to set rules that automatically determine which kickoff location to send a member to. Those rules are applied to all the members in the `Member List` tab when a job file is loaded. This will override any kickoff location already set in the job file. For more details, see *Kickoff Rule Syntax* on page 99.

- › **Delete Rule:** removes the selected rule from the list.
- › **Move Up:** moves the selected rule up one row, increasing its priority in the list.
- › **Move Down:** moves the selected rule down one row, decreasing its priority in the list.

 **Note:** when opening an optimised job file, the kickoff locations may differ between the `Member List` tab and the `Optimised` tab until you re-optimize the file with the current kickoff rules.

Statistics



The **Statistics** tab is used to manage how the daily and monthly reports are generated (see page 95).

- **Maximum Command Execution Time:** specifies the maximum time allowed between saw command executions for the system to be seen as in production.
- **Sampling Period:** specifies the time interval between two samples.
- **Monthly Statistics Interval:** specifies the time interval used to update the monthly reports.
- **Web Notifications:** when enabled, an HTTP message is sent using the specified protocol (i.e. message format) to the specified server for every member cut and for every job completed.



Notes:

- The test button is used to confirm basic connectivity with the server.
- Simple currently supports Vekta and Trussmatic (v1.1 and v1.2) protocols. If the protocol you wish to use is not listed, please contact Vekta Automation.

- **PRD Output:** specifies the output directory and other settings related to Production Feedback files.

Check **Enabled** to enable the generation of PRD files.



Note: PRD files are specifically designed for MiTek customers. For more information, please contact MiTek.

- › **RPF Output:** specifies the output directory and other settings related to Real-time Production Files.

Check **Enabled** to enable the generation of RPF files.



Note: RPF files are specifically designed for Pryda customers. For more information, please contact Pryda.

Exit

To exit the Options, do one of the following:

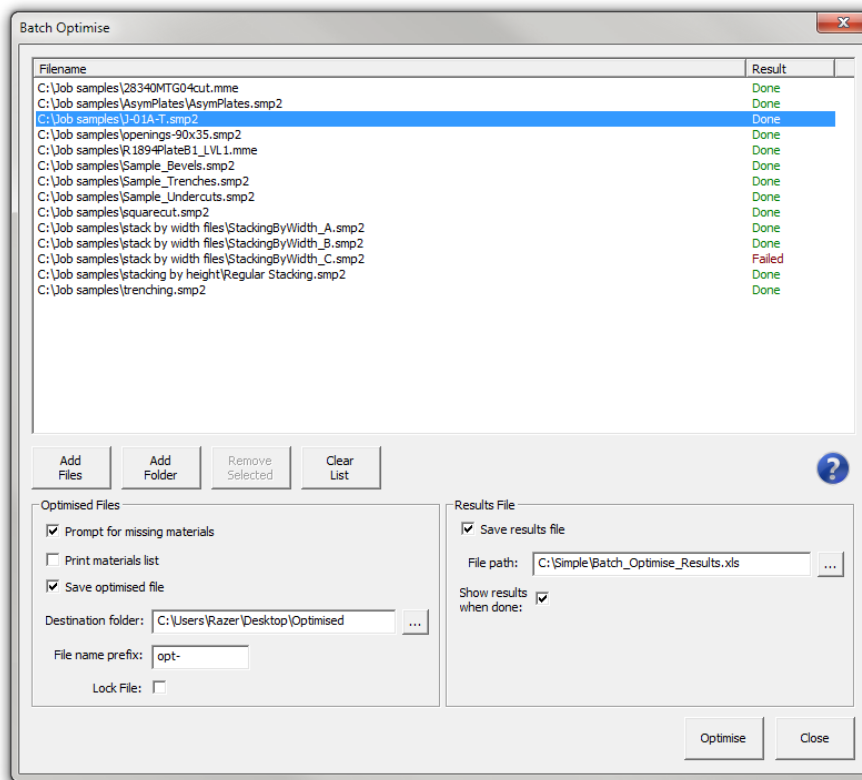
- ▶ Click .
 - ▶ The changes are saved.
- ▶ Close the Options window.
 - ▶ All changes are lost.
- ▶ Click .
 - ▶ All changes are lost.

BATCH OPTIMISE



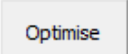
Note: This feature is available to Supervisor and Engineer access levels only.

The Batch Optimise window makes it possible to optimise several files without having to load them separately. The files are then saved in their optimised state (for more details, see *Save a file* on page 12, step 4).



To open the Batch Optimise window, select Batch Optimise... from the Tools drop-down menu in the Simple menu bar.

To run a batch optimisation, do the following:

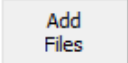
1. Make your file selection.
2. Define the output options.
3. Click .

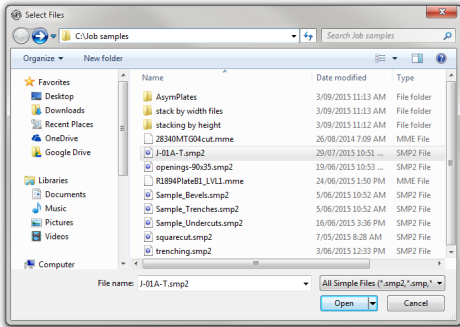


Note: All the selected files are processed regardless of whether they are locked or not. All the members present in the selected files are processed regardless of whether they are tagged as cut or not.



File selection

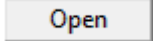
To add files to the selection, do the following:

1. Click .
2. The following window pops up:

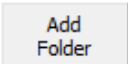


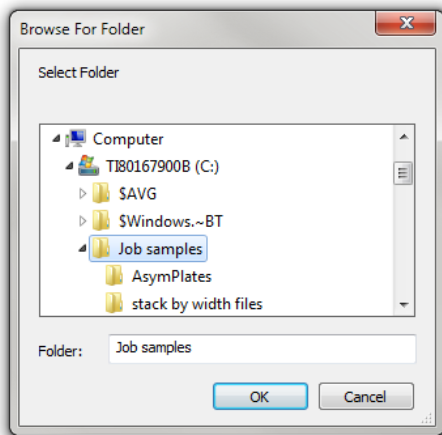
Browse for the file(s) you wish to add.

 **Note:** you can select several files by pressing and holding down either the  key for consecutive files or the  key for non-consecutive files.

3. Select the file(s) and click .

To add an entire folder to the selection, do the following:

1. Click .
2. The following window pops up:




Browse for the folder you wish to add.

3. Select the folder and click .

To remove files from the selection, select the file(s) you wish to delete and click .



Note: you can select several files by pressing and holding down either the  key for consecutive files or the **Control** key for non-consecutive files.

To empty the selection, click

Clear
List

Output options

The following output options are available:

› Optimised Files

- › **Prompt for missing materials:** displays the Add Materials window (see page 13) if a file requires missing materials.



Note: To apply the same rule to every file in the batch, check **Do this action for all files** in the Add Materials window and click either of the following:

Ignore All


The members requiring missing materials will not be optimised.

Apply

The missing materials will be added as new materials in the materials database (see page 50).

- › **Print materials list:** sends the materials list of every optimised file for printing (see page 37).
- › **Save optimised file:** saves the optimised files according to the options defined below.
- › **Destination folder:** specifies the destination path for the optimised files.



Note: The optimised files are saved as Simple files version 2 (*.smp2). You can either type in the destination path directly into the field or click  to browse for the destination folder.

- › **File name prefix:** specifies the character string to be added before the name of every optimised file.
- › **Locked:** The file and the embedded optimisation will be locked. It will never be possible to modify the file or run an optimisation again, except through the Batch Optimise feature.

› Results File

- › **Enabled:** creates a spreadsheet with the results of the batch optimisation.
- › **File path:** specifies the destination path and name of the results file.



Note: The results file must be saved as a spreadsheet (*.xls). You can either type in the destination path and file name directly into the field or click to open the Save As window.

- › **Show results when done:** opens the results file once the batch optimisation is complete.

Results file

The results of the batch optimisation are summarised in a spreadsheet that consists of the following columns from left to right:

- › **File:** path of the file the row of data relates to
- › **# Timber Lengths:** number of timbers required
- › **# Members:** number of members optimised
- › **# Stacked Members:** number of members optimised in a stack formation
- › **% Stacked Members:** percentage of members optimised in a stack formation out of the total number of members optimised
- › **Total Material Length:** total length of material required
- › **Total Usable Length:** total length of material used for members and offcuts
- › **Total Member Length:** total length of the members optimised
- › **Total Offcut Length:** total length of the offcuts produced
- › **Total Waste:** total length of waste (reusable or not)
- › **Total Waste To Bin:** total length of non-reusable waste
- › **% Waste To Bin:** percentage of non-reusable waste out of the total length of material required
- › **Total Reusable Waste:** total length of reusable waste
- › **% Reusable Waste:** percentage of reusable waste out of the total length of material required
- › **Material Cost:** total cost of the materials required
- › **All Members Optimised:** indication whether all the members of the file were optimised or not

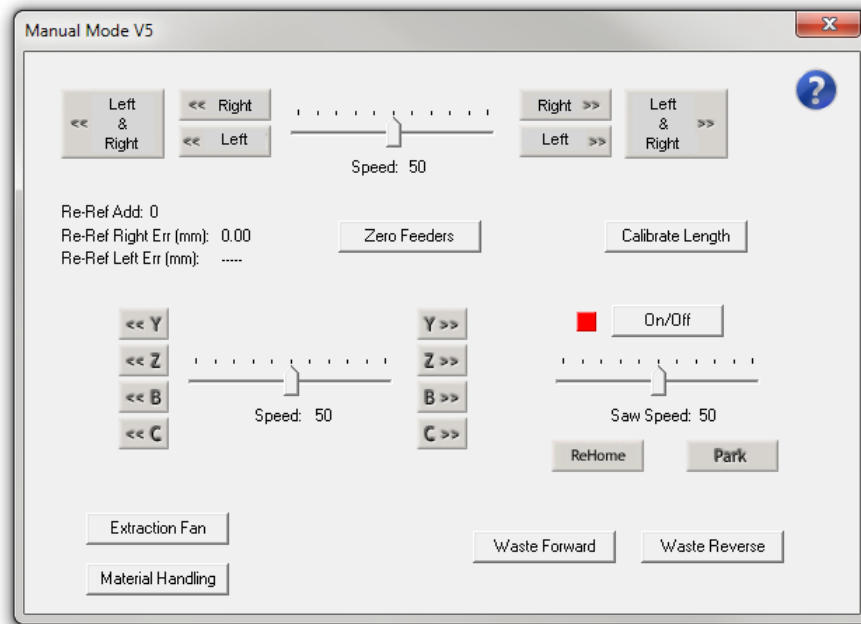


Note: the orange-highlighted lines identify the files that could not be optimised completely.

MANUAL CONTROL

Manual Mode

The Manual Mode window is used to manually move and control the saw. This is useful during maintenance, diagnostics and calibration procedures.



Access

To open the Manual Mode window, do one of the following:

- ▶ Click **Manual Mode** on the Control Bar (see page 31) in Simple.
- ▶ Press the yellow MANUAL button on the operator console.

Feeders

The upper section of the window controls the feeders (X-axis).



DANGER

If the saw either has timber clamped or has had timber clamped and the leading/trailing ends are not cleared, the clamp rollers may actuate at any time. Under no circumstances should you place any body part in the feeders while using these buttons.



Keep pressed to move both the left and right feeders in the left direction.



Keep pressed to move the right feeder in the left direction.



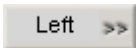
Keep pressed to move the left feeder in the left direction.



Keep pressed to move both the left and right feeders in the right direction.



Keep pressed to move the right feeder in the right direction.



Keep pressed to move the left feeder in the right direction.



Slide to adjust the feeder speed (from 0% to 100%).



Click to zero the current feeder positions.

Saw head

The middle section of the window controls the saw head.

Saw moves



Keep pressed to move the saw towards the door on Y-axis.



Keep pressed to move the saw away from the door on Y-axis.



Keep pressed to move the saw upwards on Z-axis.



Keep pressed to move the saw downwards on Z-axis.



Keep pressed to move the saw blade towards the horizontal position on B-axis.



Keep pressed to move the saw blade towards the vertical position on B-axis.



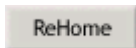
Keep pressed to move the saw counter-clockwise on C-axis (viewed from the top).



Keep pressed to move the saw clockwise on C-axis (viewed from the top).



Slide to adjust the speed of the above movements (from 0% to 100%).

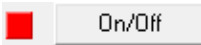


Click to require a rehoming cycle before the next start. Make sure the STOP and MANUAL lights are on and press the green START button on the operator console to start the rehoming cycle.



Click to move the saw to the park location (blade facing the door). This can be used to position the saw head properly for changing the blade.

Saw blade



Click to turn the saw blade on and off. Click once to start the saw blade (the indicator turns green when the saw blade is spinning). Click a second time to stop it.



Slide to adjust the saw blade speed from 0% (0 rpm) to 100% (about 5500 rpm).

Peripherals

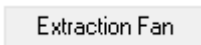
The lower left section of the window controls some peripherals.



Click once to run the waste conveyor towards the waste bin. Click a second time to stop it.



Click once to run the waste conveyor towards the door. Click a second time to stop it.



(optional)

Click once to start the dust extractor and the extended waste conveyor. Click a second time to stop.



Notes:

- This button can only be used if the saw is homed.
- It will only stop the dust extractor after a delay of one minute.



(optional)

Click to open the Material Handling window (see page 62).

Other features

The window includes other specific features.

Calibrate Length

Click to open the [Length Calibration](#) window.



Note: This feature is available to Supervisor and Engineer access levels only.

Re-Ref Add: 0
Re-Ref Right Err (mm): 0.00
Re-Ref Left Err (mm): 0.00

These values are used for the [calibration of the re-referencing system](#).

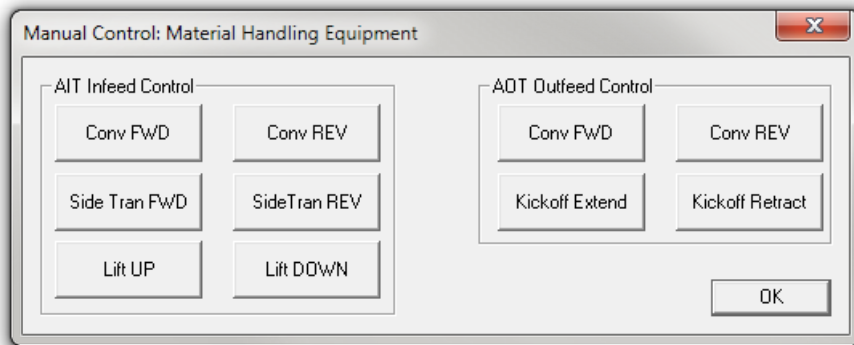
Exit

To exit the Manual Mode, do one of the following:

- Close the Manual Mode window.
- Press the yellow MANUAL button on the operator console.

Material Handling

The Material Handling window is used to manually control the AIT (Automatic Infeed Table) and OFK (Outfeed Kickoff Table).



Access


To open the Material Handling window, do the following:







1. Access the Manual Mode (see page 59).
2. Click [Material Handling](#).

Automatic Infeed Table

The left section of the window controls the AIT.




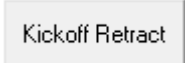


Note: The AIT needs to be enabled for these buttons to operate. Make sure the AIT toggle button on the toolbar looks like this: 

	Click once to run the infeed conveyor forward (towards the saw). Click a second time to stop it.
	Click once to run the infeed conveyor in reverse (away from the saw). Click a second time to stop it.
	Click once to run the side transfer conveyor forward (towards the infeed conveyor). Click a second time to stop it.
	Click once to run the side transfer conveyor in reverse (away from the infeed conveyor). Click a second time to stop it.
	Click to raise the infeed conveyor.
	Click to lower the infeed conveyor.

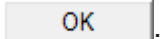
Outfeed Kickoff Table

The right section of the window controls the OFK.

	Click once to run the outfeed conveyor forward (away from the saw). Click a second time to stop it.
	Click once to run the outfeed conveyor in reverse (towards the saw). Click a second time to stop it.
	Click to extend the kickoff arm on the outfeed conveyor.
	Click to retract the kickoff arm from the outfeed conveyor.

Exit

To exit the Material Handling, do one of the following:

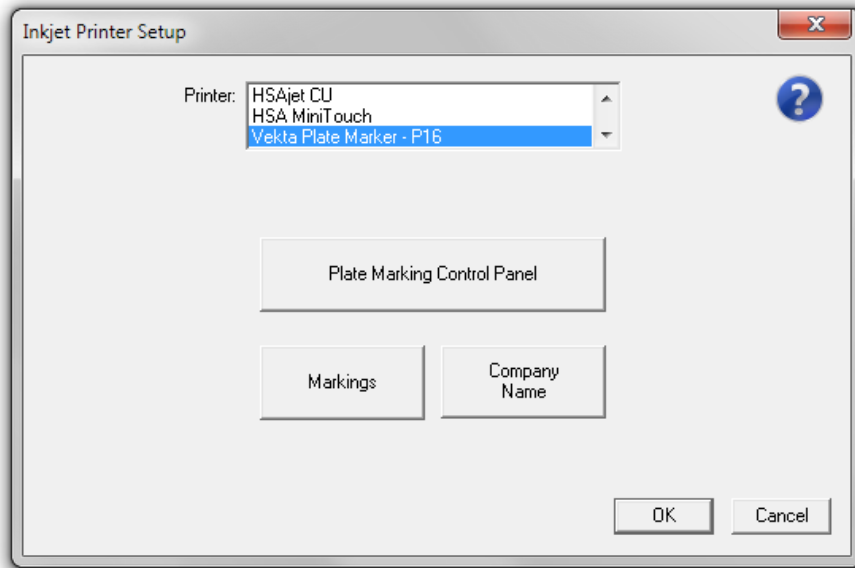
- ▶ Close the Material Handling window.
- ▶ Click .

PRINTING

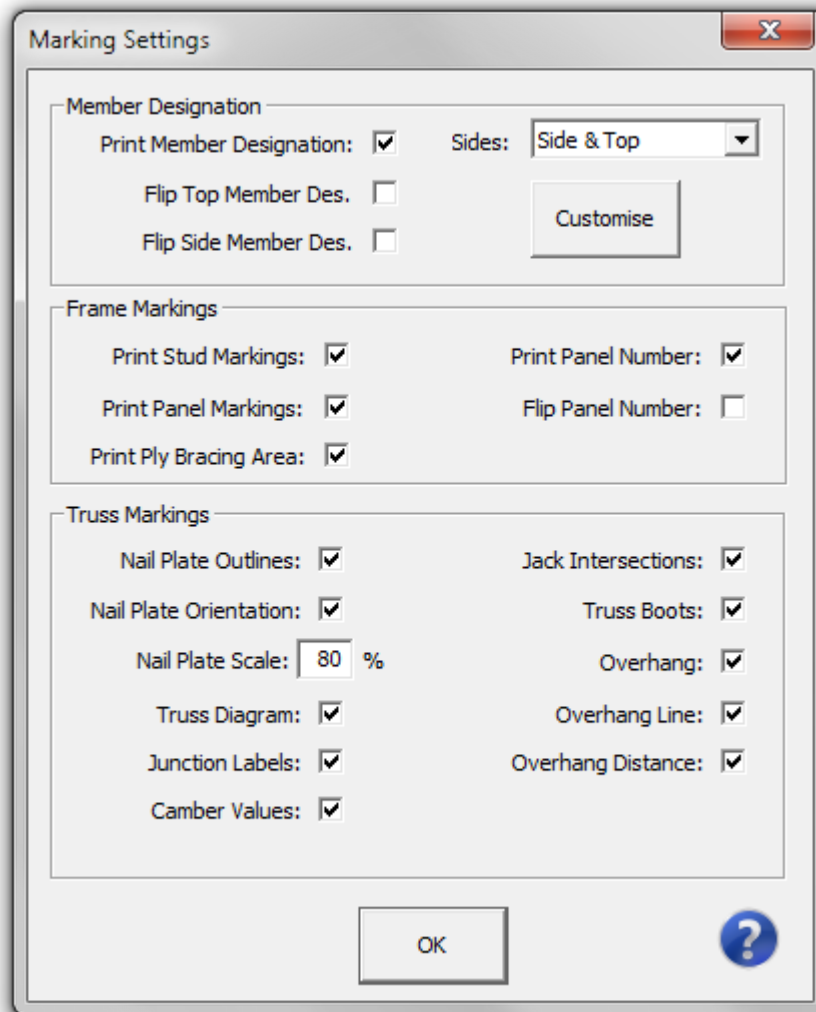
Printer Setup

The Printer Setup window is used to specify the truss- or frame-related markings to be printed on the members, to customise the members with your company's name or logo, and gives access to the Plate Marking Control Panel (see page 71).

To open the Printer Setup window, click **Printer...** on the Control Bar (see page 31).



Markings Supervisor and Engineer access only



When you click Markings, the above window pops up.

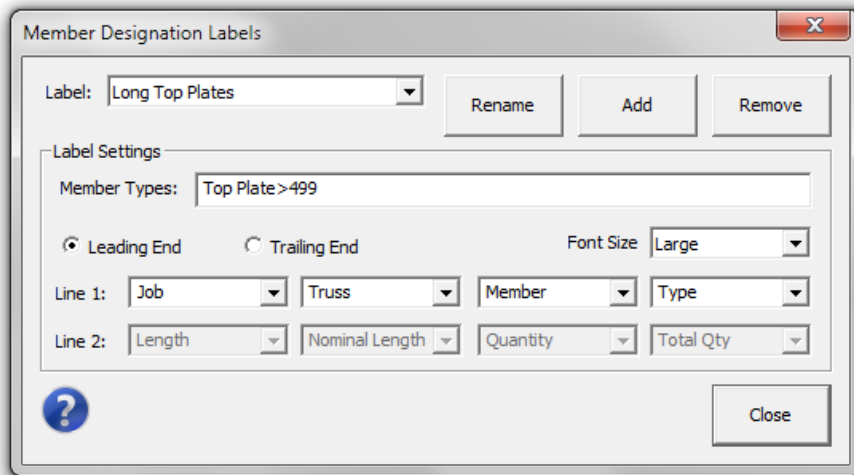
Member Designation

A Member Designation Label can be printed on the edge and on the top side of the members. The following options are available:

- › **Print Member Designation:** enables the printing of the Member Designation Label.
- › **Sides:** specifies where the Member Designation Label is printed.
 - › **Side:** prints on the edge of the members.
 - › **Top:** prints on the top side of the members.
 - › **Side & Top:** prints on both the edge and the top side of the members.

- › **Flip Top Member Des.:** turns the top-printed Member Designation Label upside down.
- › **Flip Side Member Des.:** turns the edge-printed Member Designation Label upside down.

The **Customise** button gives access to the following window where you can specify what information is automatically printed on the members and how it is printed:



Multiple labels can be created for different groups of members. The rule that defines the group of members for each label can be entered in the **Member Types** field. You can click **Add** to create a new label, **Rename** to rename the selected label or **Remove** to delete the selected label.

The following options are available for each label:

- › **Leading End:** prints closer to the leading end of the member.
- › **Trailing End:** prints closer to the trailing end of the member.
- › **Font Size:** specifies the size of the text printed.
 - › **Small:** allows two line(s) of information to be printed.
 - › **Large:** allows only one line of information to be printed (**Line 1**).
- › **Line 1 & Line 2:** each line can contain a combination of four pieces of information to choose from the following:
 - › **Job:** designation of the job the member belongs to
 - › **Truss:** designation of the assembly the member is part of
 - › **Member:** designation of the member within the assembly
 - › **Type:** abbreviated type of member (top/bottom chord, top/bottom plate, web...)
 - › **Length:** overall length of the member including any automatic length adjustment
 - › **Nominal Length:** overall length of the member as it appears in the job file

- » **Quantity:** member number out of the total quantity of the same member (e.g. "1 of 2")
- » **Total Quantity:** total number of the same member to be cut
- » **Truss Order:** order number of the assembly according to the position of its first occurrence in the job file



Note: sorting the members in the **Member List** tab based on a particular column will not change the truss order.

- » **Filename:** name of the job file without the extension
- » **ID:** string used for troubleshooting (for Vekta use only)
- » **Bundle:** number of the bundle (stack) containing the assembly the member is part of
- » **Bundle Row:** number of the bundle row containing the assembly the member is part of
- » **Bundle Row Pos:** position in the bundle row of the assembly the member is part of



Notes:

- To leave a field empty, click it and press the **Delete** key, or right-click it and select **Delete** from the context menu.
- You can also type in a custom entry in any box that will appear unchanged on all members.

Click  to apply the changes and close the window.

Truss Markings

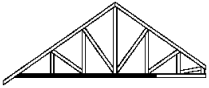
These settings make it possible to print the following truss-related markings on each member:



A **Nail Plate Outline** is printed wherever a nail plate is supposed to be. It shows the portion of the nail plate positioned as it should be when fixed to the member. A scale must be defined in the **Nail Plate Scale** field (100% corresponds to the actual size). If **Nail Plate Orientation** is enabled, black lines will be printed inside the nail plates to show their actual orientation.



Note: The nail plates located along certain members (not at the ends) are sometimes represented by a single line that shows approximately where the edge of the nail plate should be. This is to address the possible variation in the position of the nail plates at those junctions on the actual truss.



The **Truss Diagram** shows an overview of the entire truss that contains the member. The member itself is shown in black. The diagram is oriented so that it is level when the member is positioned in the intended orientation.



A **Junction Label** is printed wherever a junction with another member is supposed to be. It shows the designation of the other member that is present at the junction. The arrow indicates which way the designated member is located.



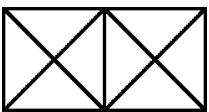
A **Camber Value** is printed close to the junction label wherever a camber is needed. The number after the C letter gives the camber value (in mm) that should be applied at the junction.



A **Jack Intersection** marking is printed on the edge wherever an intersection with a jack truss is supposed to be. The arrow indicates which way the jack truss is located. Information about the intersecting jack truss is printed next to it.

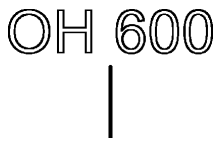
Notes:

- A black rectangle aligned with the arrow is printed on the top side for better visibility from above.
- Two opposite arrows are shown if there is a jack truss on both sides.



A **Truss Boot** marking is printed on the top side wherever a truss boot is supposed to be. Details about the truss boot is printed next to it (if present in the job file). Each connected truss is represented by a crossed square.

Note: if the marking cannot be printed on the actual side, it will be dashed to indicate that the truss boot is actually on the opposite side.



An **Overhang** marking (OH) is printed wherever an overhang is supposed to start. This can include either or both of the following:

- » an **Overhang Line** showing the exact starting point of the overhang on the member
- » the **Overhang Distance** indicating the overhang length (in mm) from the starting point to the end of the member

Frame Markings

These settings make it possible to print the following frame-related markings on each member:



A **Stud Marking** is printed on the edge wherever a junction with a stud (or another frame component except plate) is supposed to be. It shows the designation of the component (determined by the detailing software) that is present at the junction. The marking is oriented as the component should be when joined to the member.



A **Panel Marking** is printed on the top side wherever a junction with another panel (i.e. frame) is supposed to be. It shows the designation of the panel (determined by the detailing software) that is present at the junction.



Notes:

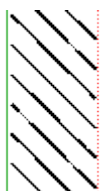
- If trench cuts are present on the top side of the member, the panel marking will be printed on the edge.
- A panel marking that is printed at one end with no separating lines indicates that the joined panel is against the end of the member.



The **Panel Number** is printed on the top side and edge of plates only (top, very top or bottom plate). It shows the designation of the panel (i.e. truss name) the plate belongs to.



Note: If **Flip Panel Number** is checked, the panel number will be turned upside down (from Simple V10.239 onwards).



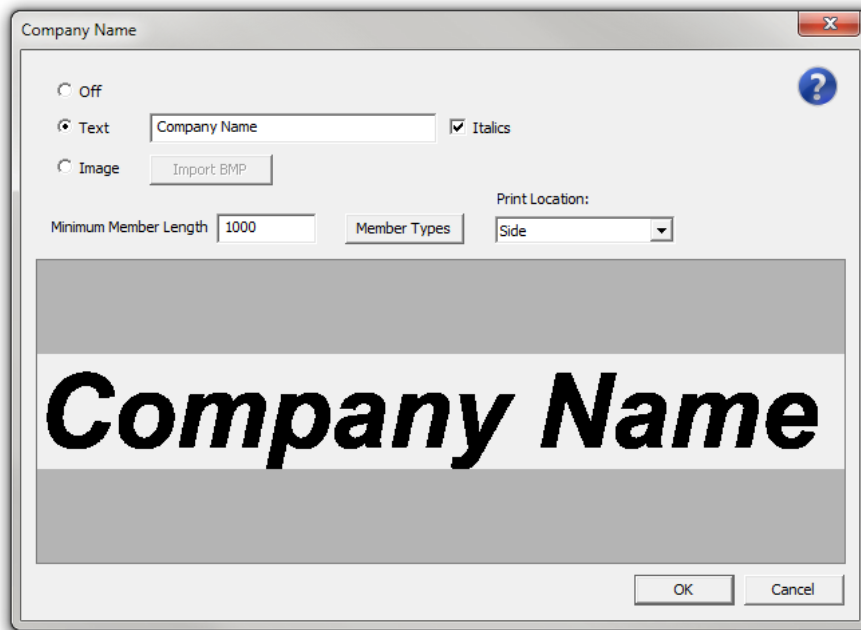
Ply Bracing Areas are printed on top and bottom plates where ply bracing should be added to a frame.



Note: ply bracing positions are derived from stud markings with a BR label.

Click to apply the changes and close the window.

Company Name



When you click , the above window pops up.

Your company's name or logo can be printed along with the Member Designation Label (see page 65) on the edge and on the top side of the members. The following options are available:

- › **Off**: disables the feature (no text or logo will be printed).
- › **Text**: enables the company name to be printed as text. Type the company name in the text box and check Italics if you want it to be printed in italics.



Note: the font defined in the field (see *Other features* on page 72) will be used to print the company name.

- › **Image**: enables the company name or logo to be printed as an image.
 1. Click .
 2. Browse for the .bmp file you wish to use.
 3. Select the file and click , or just double-click it.
- › **Minimum Member Length** (in mm): specifies the minimum member length allowed for the company name or logo to be printed.

- › **Member Types**: displays the types of members the company name or logo can be printed on.



Note: to add or remove a member type, please contact Vekta Automation.

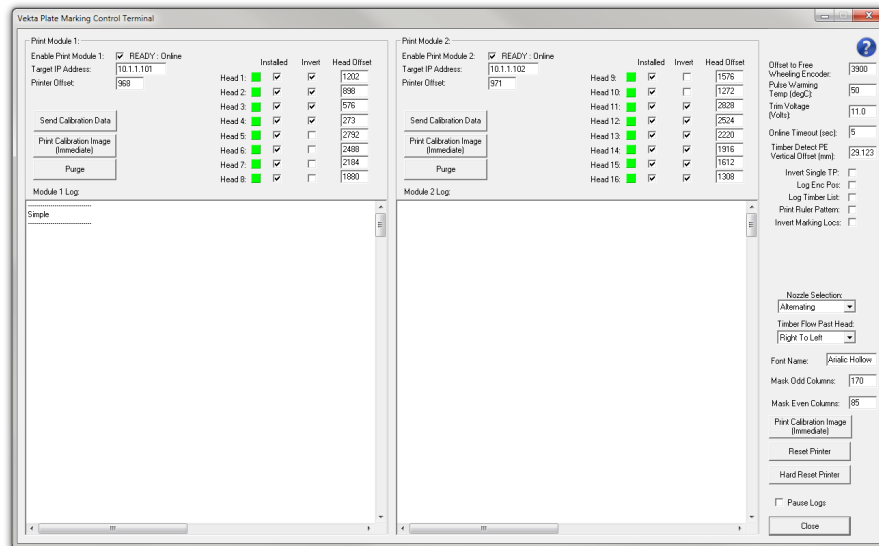
- › **Print Location:** specifies where the company name is printed.
 - › **Side:** prints on the edge of the members.
 - › **Top:** prints on the top side of the members.
 - › **Side & Top:** prints on both the edge and the top side of the members.

A print preview of the company name or logo is displayed in the bottom part of the window.

Click **OK** to apply the changes and close the window.

Plate Marking Control Panel

The Plate Marking Control Panel is used to configure, monitor and troubleshoot the printer.

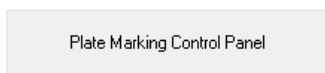


Access

To open the Plate Marking Control Panel, do the following:

1. Access the Printer Setup window (see page 64).

2. Click



Print modules

The machine is equipped with two print modules and each one of them controls eight print heads located as follows:

- Print module 1
 - Heads 1 to 4: side print heads
 - Heads 5 to 8: first row of top print heads
- Print module 2
 - Heads 9 to 10: first row of top print heads
 - Heads 11 to 16: second row of top print heads

The print modules can be managed and monitored using the following features:

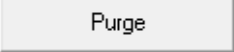
- › **Enable Print Module 1 & 2:** enables or disables printing on the module. A message next to the checkbox gives the current status of each print module.
- › **Installed:** enables or disables printing on the head.



Note: it can be useful to disable one particular head that is not working properly in order to keep the whole module running.

The colour of the indicator lights gives the current status of each print head as follows:

- The print head is ready.
- The print head is not calibrated / not ready.
- The print head is not available.
- The print head is disabled (Installed unchecked).

- ›  : triggers a purge of the print heads for each print module independently.



Note: A purge may be necessary if the printer has not been used for a long time or if the ink has dried. Both buttons can be used at the same time. Make sure to place a cloth or sheet of paper in front of the corresponding print heads before starting the purge.

Other features

The following are available at the bottom right of the Plate Marking Control Panel:

- › **Font Name:** specifies what font is used for all the information printed on the members.



Notes:

- This feature is available to Supervisor and Engineer access levels only.
- The font must be installed on the computer and the exact font name must be entered (case-insensitive).
- The following font types are supported:
 - TrueType (*.ttf)
 - TrueType Collection (*.ttc)
 - OpenType (*.otf)
 - PostScript Type 1 (*.pfb + *.pfm)
- If not all the conditions are met, the default font will be used.

➤ **Printer Reset:** If the printer is not working properly, it can be reinitialised using one of the following buttons:

Reset Printer

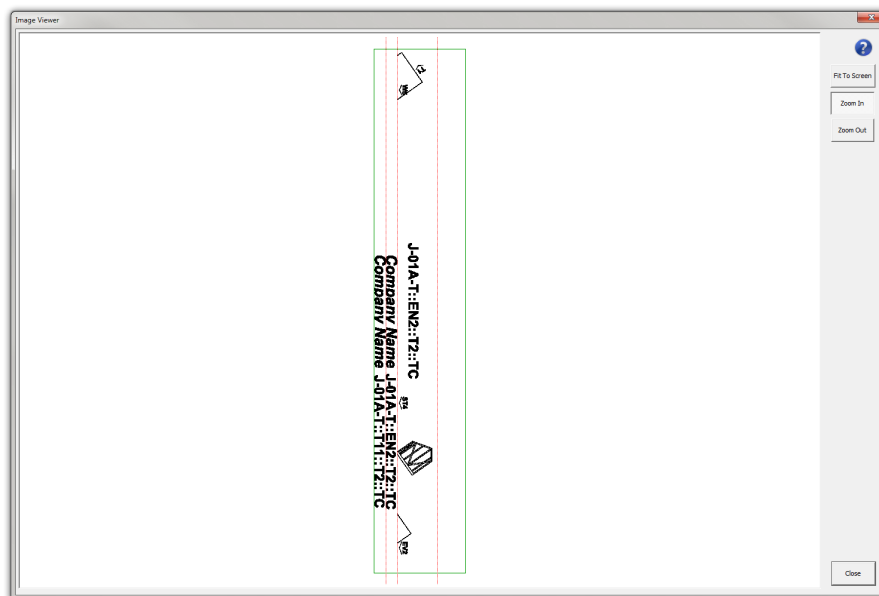
Click to do a soft restart of both print modules (recommended if the printer is still responding).

Hard Reset Printer

Click to force a power cycle of both print modules (only if the printer is not responding).

Print Preview

The Print Preview window shows the actual image that will be sent for printing on a specific member or stack of members according to the settings defined in the Printer Setup window (see page 64) and Plate Marking Control Panel (see page 71).



Access

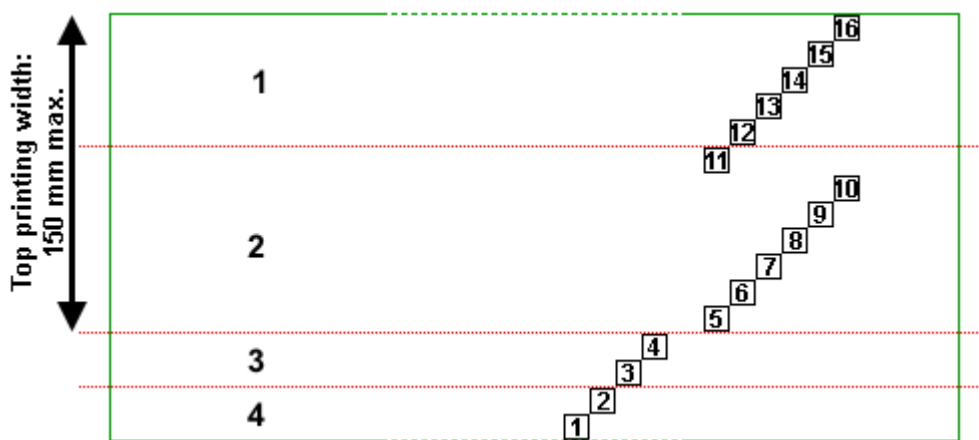
To open the Print Preview window for a member, do the following:

1. Right-click the desired member in the Member List or Optimised tab.
2. Select Preview Image... from the context menu.



Note: The Print Preview window for a stack of members can only be opened from the Optimised tab. Make sure to always select the member listed first in the stack (not the one displayed in light grey).

Printable areas



Note: the diagram above is based on a 90-mm-wide material.

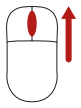
The green rectangle delimits the entire printable area.

The numbered squares indicate where each print head prints on the timber (for more details about the print heads, see *Print modules* on page 72).

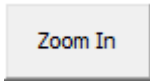
The red dotted lines delimit the following areas:

1. Top side of the horizontally stacked member that is away from the fenceline
2. Top side of a non-stacked member, or top side of the top-stacked member
3. Edge of the top-stacked member
4. Edge of a non-stacked member, or edge of the bottom-stacked member

Controls

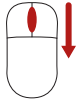


or

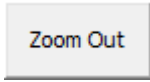


Toggle this button on then click the image to zoom in on the clicked location.

Alternatively, you can simply scroll up with the mouse wheel to zoom in.

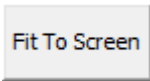


or

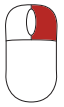


Toggle this button on then click the image to zoom out from the clicked location.

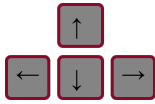
Alternatively, you can simply scroll down with the mouse wheel to zoom out.



Click to fit the image to the window.



or



Use the arrow keys to move the image around.

Alternatively, you can hold down the right-click button and use the mouse to move the image around.

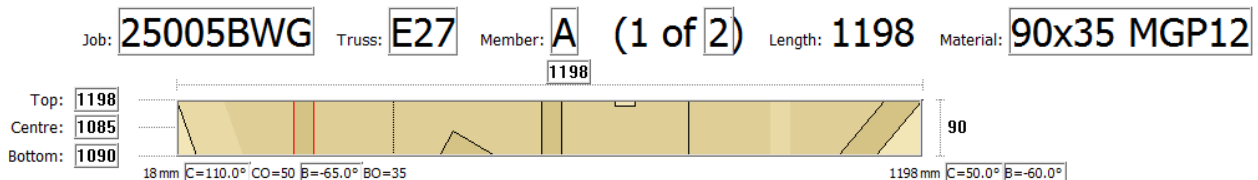
MEMBER EDITING

Basic Member Editing

When the Member List tab is active, some parameters of the currently selected member can be edited directly on the Member Diagram (see page 29).

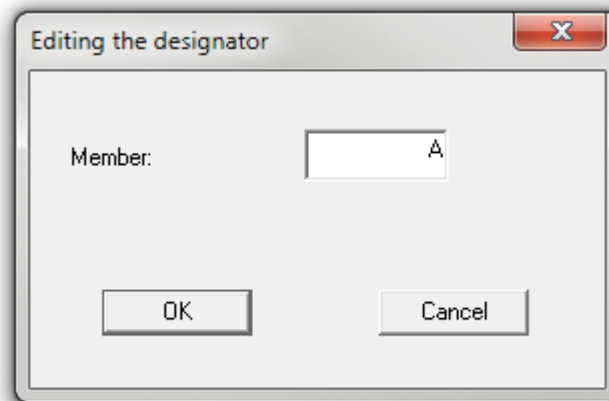


Note: The editable parameters can be easily identified on the member diagram by boxes drawn around them (see image below). If they are not already present, check **Draw editing boxes in the member list view** in the **General** tab of the Options window (see page 41).



Note: Any change will take effect immediately in the **Member List** and **Member Tree** tabs. However, the **Optimised** tab will only be updated at the next optimisation.

Edit a designation



To edit the job, truss or member designation, do the following:

1. Double-click the relevant designation on the member diagram.
↳ A window like the one above pops up.
2. Enter the new designation.
3. Click or press the key.

Edit the quantity



To edit the quantity of the member, do the following:

1. Double-click the quantity on the member diagram.
↳ The above window pops up.

2. Enter the new quantity.

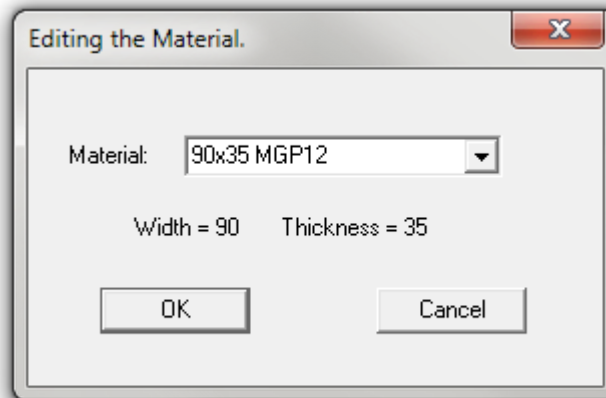


Note: You can use either the physical keyboard or the touch keypad available on the screen.

To correct the entry with the touch keypad, use the button.

3. Click or press the key.

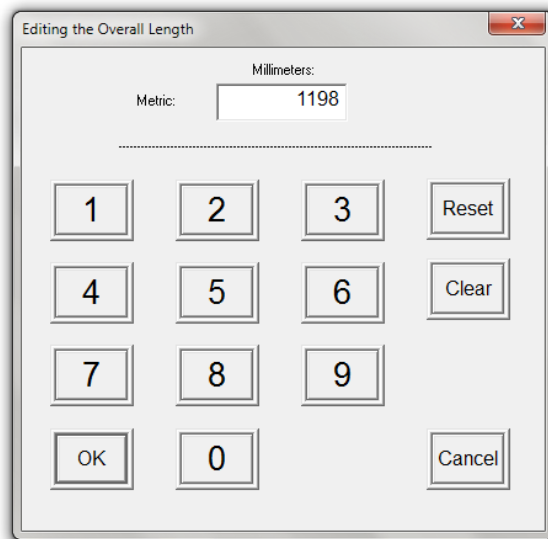
Edit the material



To edit the material assigned to the member, do the following:

1. Double-click the material description on the member diagram.
↳ The above window pops up.
2. Select the new material from the drop-down list.
3. Click or press the key.

Edit a dimension

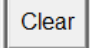


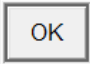

To edit the overall length, or the top, centre and bottom dimensions of the member, do the following:

1. Double-click the relevant dimension on the member diagram.
↳ A window like the one above pops up.
2. Enter the new value.

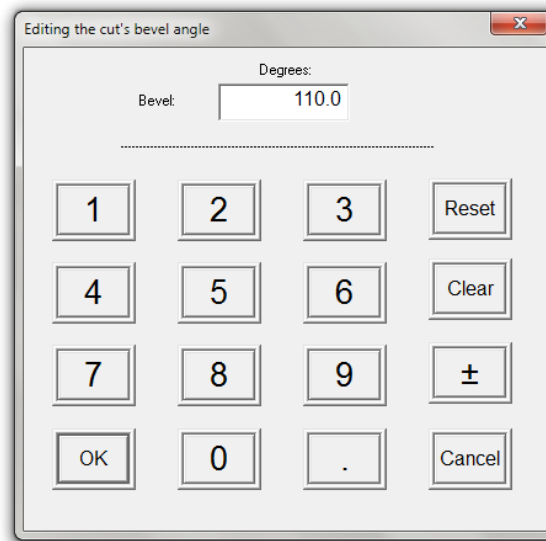


Note: You can use either the physical keyboard or the touch keypad available on the screen.

To correct the entry with the touch keypad, use the  button.

3. Click  or press the  key.

Edit an angle

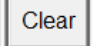


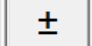
To edit the angle of a cut or a bevel angle, do the following:

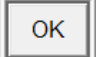

1. Double-click the relevant angle value on the member diagram.
 - ↳ A window like the one above pops up.
2. Enter the new value.



Note: You can use either the physical keyboard or the touch keypad available on the screen.

To correct the entry with the touch keypad, use the  button.

To reverse the sign of a bevel angle, use the  button.

3. Click  or press the  key.

Complete Member Editing

In order to change the entire shape of a member, create a new member, add special features to a member, or manage custom members, it is necessary to open the Complete Member Editing window.



Note: Any change will take effect immediately in the Member List and Member Tree tabs. However, the Optimised tab will only be updated at the next optimisation.

Edit a member

To edit a member, do the following:

1. Switch to the Member List tab, if not already active.
2. Access the Complete Member Editing window by doing one of the following:
 - ▶ Double-click the member you wish to modify.
 - ▶ Select the member you wish to modify and double-click the member area on the Member Diagram (see page 29).
 - ▶ Right-click the member you wish to modify and select Add/Edit Member from the context menu.

3. In the Complete Member Editing window, do at least one of the following:
 - a. Choose another member type from the drop-down menu at the top of the window.
 - b. Enter new parameters in the lower part of the window.

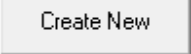
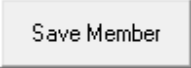


Note: You may need to check Enable Full Member Editing to expand the lower part of the window. You can click the description of a field to get additional information about that field.

- c. Edit the special features of the member (see page 84).

4. Click  to apply the changes.



Note: you can also click  to save the modified member as a new member in the **Member List**, or click  to save it as a new custom member (see page 81).

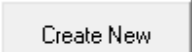
Create a new member

To create a new member, do the following:

1. Switch to the **Member List** tab, if not already active.
2. Access the Complete Member Editing window by doing one of the following:
 - ▶ Double-click anywhere in the **Member List** tab.
 - ▶ Double-click the member area on the Member Diagram (see page 29), whatever member is selected.
 - ▶ Right-click anywhere in the **Member List** tab and select **Add/Edit Member** or **Add New Member** from the context menu.
3. In the Complete Member Editing window, do the following:
 - a. Choose a member type from the drop-down menu at the top of the window.
 - b. Enter the parameters of the new member in the lower part of the window.



Note: You may need to check **Enable Full Member Editing** to expand the lower part of the window. You can click the description of a field to get additional information about that field.

- c. Edit the special features of the new member, if required (see page 84).
4. Click  to add the new member to the **Member List**.

Custom members



Note: Custom members are specific members saved separately for future use with any file. They are intended to be used as offcuts. For more details, see *Offcuts* on page 48.

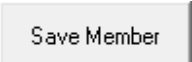
Create a custom member

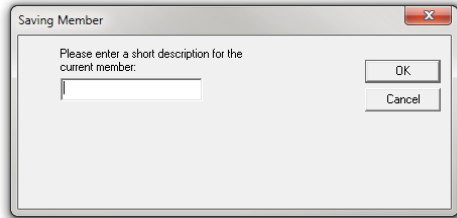
To create a custom member, do the following:

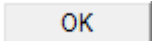
1. Switch to the Member List tab, if not already active.
2. Access the Complete Member Editing window by doing one of the following:
 - ▶ Double-click anywhere in the Member List tab.
 - ▶ Double-click the member area on the Member Diagram (see page 29), whatever member is selected.
 - ▶ Right-click anywhere in the Member List tab and select Add/Edit Member or Add New Member from the context menu.
3. In the Complete Member Editing window, do the following:
 - a. Choose a member type from the drop-down menu at the top of the window.
 - b. Enter the parameters of the new custom member in the lower part of the window.



Note: You may need to check **Enable Full Member Editing** to expand the lower part of the window. You can click the description of a field to get additional information about that field.

- c. Edit the special features of the new custom member, if required (see page 84).
4. Click .
 5. The following window pops up:



Enter a designation for the new custom member and click .

Edit a custom member

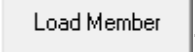


Note: the designation and length of a custom member can be changed directly in the **Offcuts** tab of the Options window (see page 48).

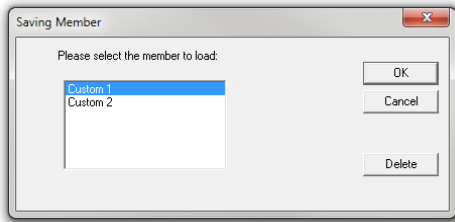
To edit a custom member, do the following:

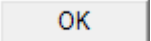
1. Switch to the Member List tab, if not already active.
2. Access the Complete Member Editing window by doing one of the following:
 - ▶ Double-click anywhere in the Member List tab.
 - ▶ Double-click the member area on the Member Diagram (see page 29), whatever member is selected.

- Right-click anywhere in the Member List tab and select Add/Edit Member or Add New Member from the context menu.


3. Click .

4. The following window pops up:

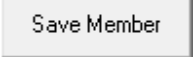


Select the custom member you wish to modify and click .

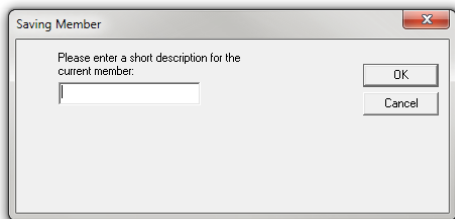
- In the Complete Member Editing window, do at least one of the following:
 - Choose another member type from the drop-down menu at the top of the window.
 - Enter new parameters in the lower part of the window.

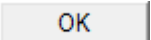
 **Note:** You may need to check **Enable Full Member Editing** to expand the lower part of the window. You can click the description of a field to get additional information about that field.

- Edit the special features of the custom member (see page 84).


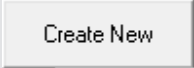
6. Click  to save the modified custom member as a new custom member.

7. The following window pops up:



Enter a designation for the new custom member and click .

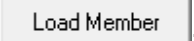
- Delete the former version of the custom member, if required (for more details, see *Delete a custom member* on the next page).

 **Note:** you can also click  at step 6 to save the modified custom member as a new member in the **Member List**.

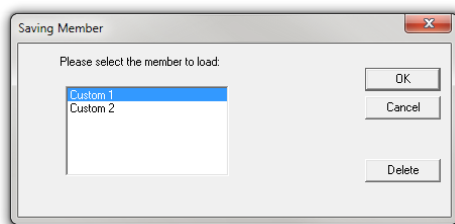
Delete a custom member

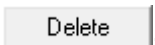
To delete a custom member, do the following:

1. Switch to the Member List tab, if not already active.
2. Access the Complete Member Editing window by doing one of the following:
 - ▶ Double-click anywhere in the Member List tab.
 - ▶ Double-click the member area on the Member Diagram (see page 29), whatever member is selected.
 - ▶ Right-click anywhere in the Member List tab and select Add/Edit Member or Add New Member from the context menu.

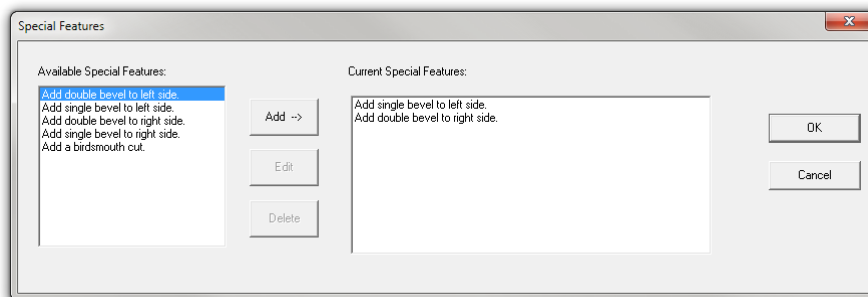
3. Click .

4. The following window pops up:



Select the custom member you wish to delete and click .

Special features

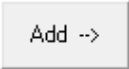


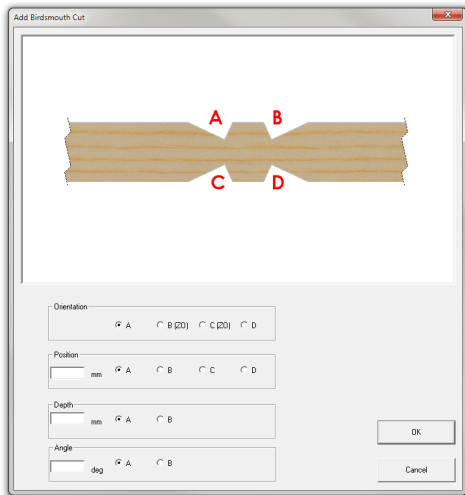
Depending on which member type has been chosen at the top of the window, some or all of the following special features can be added to the member:

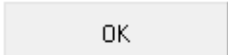
- Single bevel cut on either side
- Double bevel cut on either side
- Birdsmouth cut

To access the Special Features window, click  in the Complete Member Editing window.


To add a special feature to the member, do the following:

1. In the left part of the window, select a special feature you wish to add.
2. Click .
3. In the case of a birdsmouth cut, the following window pops up:




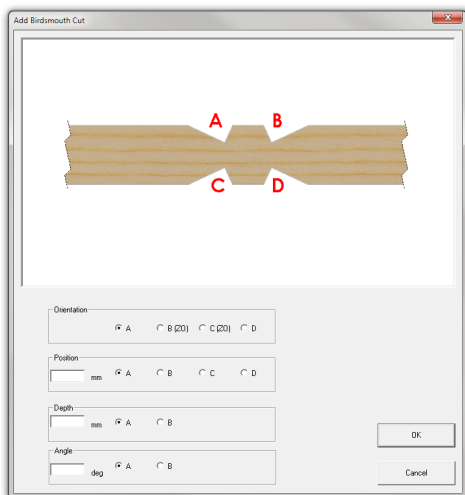
Enter the parameters of the birdsmouth cut and click .

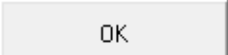
To remove a special feature from the member, do the following:

1. In the right part of the window, select a special feature you wish to remove.
2. Click .

To modify an existing birdsmouth cut, do the following:

1. In the right part of the window, select a birdsmouth cut you wish to modify.
2. Click .
3. The following window pops up:

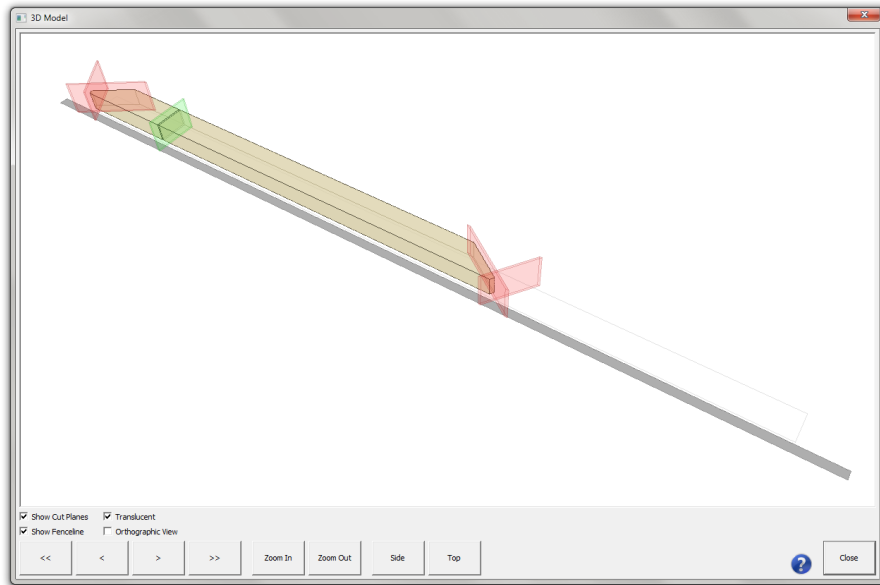


Enter the new parameters of the birdsmouth cut and click .

Once all the special features you wish to add to the member are listed in the right part of the window, click to apply the changes.

3D MODEL

The 3D Model window shows a realistic 3D representation of a specific member or of the optimised layout of a specific board.



Access

To open the 3D Model window, do the following:

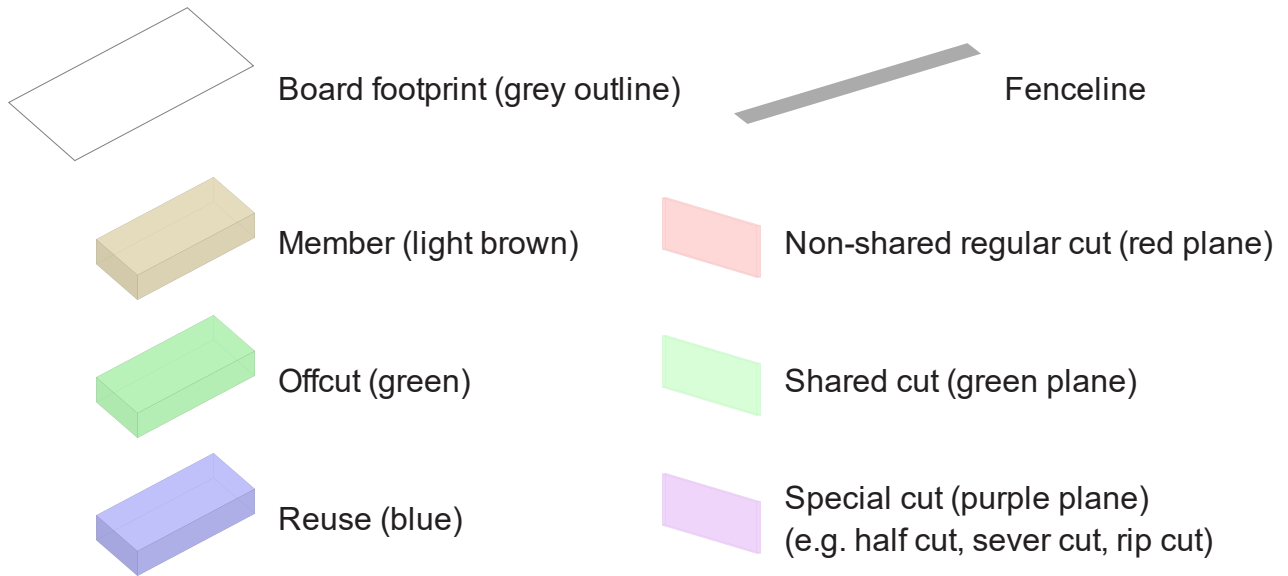
1. Right-click a member in the Member List or Optimised tab.
2. Select 3D Model... from the context menu.



Note: If opened from the Member List tab, the 3D Model window will show a representation of the selected member only. If opened from the Optimised tab, the full composition of the board or stack formation containing the selected member will be shown.

Legend

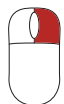
The following elements can be present on the 3D model:



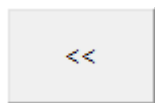
Notes:

- The board footprint is only visible when opening the 3D model from the Optimised tab.
- you can show or hide the fenceline and cutting planes by using the checkboxes in the lower left corner of the window.

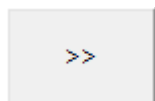
Controls



Hold down the right-click button and move the mouse to rotate the model.



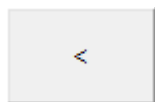
Click to jump to the previous member end.



Click to jump to the next member end.



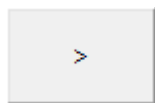
or



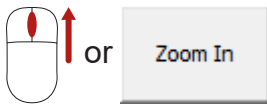
Press the left arrow key on the keyboard or click this button to move the camera one step to the left.



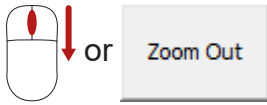
or



Press the right arrow key on the keyboard or click this button to move the camera one step to the right.



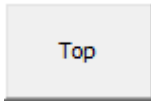
Scroll up with the mouse wheel or click this button to move the camera closer to the board.



Scroll down with the mouse wheel or click this button to move the camera farther from the board.



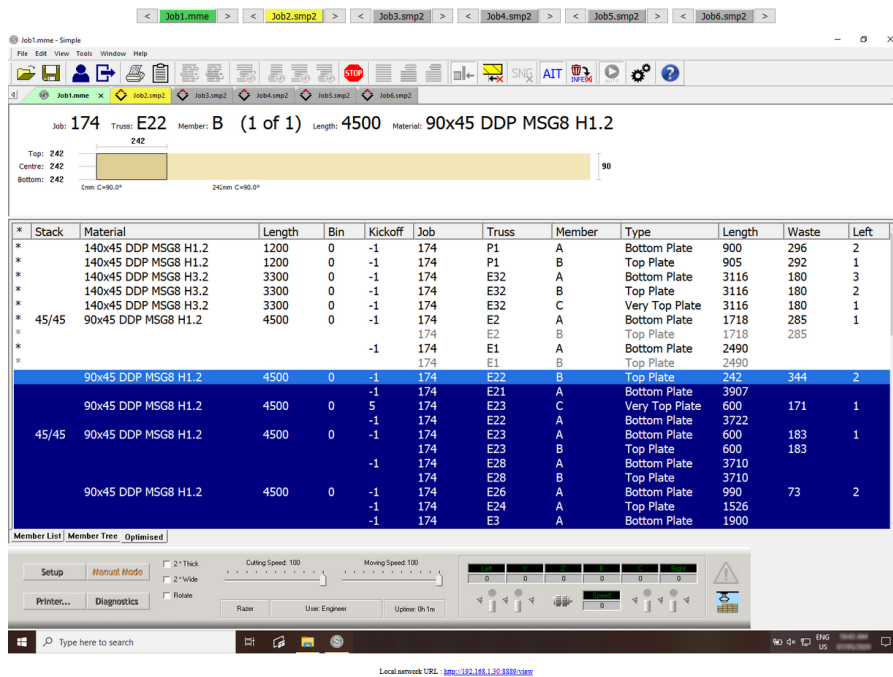
Click to switch to the side view.



Click to switch to the top view.

REMOTE VIEW

A webpage can be accessed remotely that displays the Razer console screen.



Access

To access the remote view, launch a web browser on a remote machine and enter "[RazerSaw:8889/view](#)" in the address bar, where "RazerSaw" would be the hostname (for local network access only) or IP address of the Razer PC.

**Notes:**

- Your network and firewall configuration may need to be adjusted to allow remote access.
- The webserver port (8889 by default) can be changed in the **General** tab of the Options window (see page 41).

Use

The remote view is intended for use on sites where the operator is not always at the Razer console (e.g. in the yard collecting packs of timber). It allows the operator to see what is happening at the saw and allows for some basic interaction. The view refreshes at regular intervals and will alert the user to any error arising on the saw. If the user clicks on the image, a corresponding mouse click will occur at that position on the remote console screen.



Note: this feature is not meant to be a replacement for other more advanced remote control tools.

Job Ordering

The row of buttons at the top of the remote view can be used to manage the order of job tabs on the console screen as follows:

- ▶ Click the arrow on either side of a job button to move the corresponding job tab in the direction of the arrow.
- ▶ Click any job button to refresh the view (this doesn't switch to the corresponding job tab).

**Notes:**

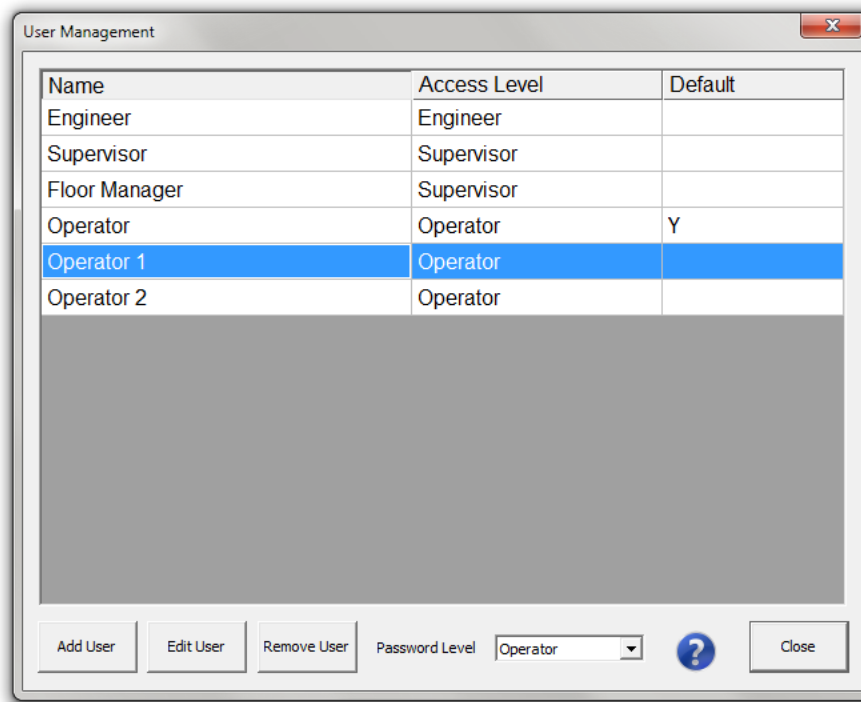
- When the saw is not running, all jobs can be reordered to any order required. When the saw is running, only jobs to the right of the current running job can be reordered as they have not been run yet.
- If a Packfeeder 2 is running, only jobs to the right of the next pending job can be reordered as the picklist has already been sent for the current job and the next one.
- The colour of the job button matches the one of the job tab on the remote view. When a cutting sequence is running, the current job tab is displayed with a green background. If automatic Job Sequencing is enabled (see page 19), the next job tab will be displayed with a yellow background.
- If one or more tabs have been dragged out into a separate pane on the console screen, they will form a new tab group and the remote view will only allow to reorder jobs within their tab group (i.e. the job movement will stop at either end of the enclosing tab group).

USER MANAGEMENT



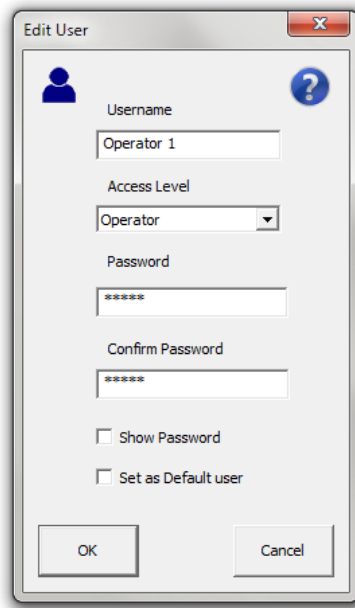
Note: This feature is available to Supervisor and Engineer access levels only.

Multiple users can be registered on the saw. Each user can have their own account secured by a password and be assigned a specific User Access Level (see page 93). Additionally, user accounts can be useful to monitor the production levels of specific individuals operating the saw (see *User Summaries* on page 97).



To open the User Management window, select User Management... from the Tools drop-down menu in the Simple menu bar.

Add/Edit a user



To add a new user or change the details of an existing user, do the following:

1. In the User Management window, select the user you wish to edit (if applicable).
2. Click **Add User** or **Edit User** as appropriate.
 ↳ The above window pops up.
3. Enter or edit the user's details.



Notes:

- The password is case-sensitive.
- The password fields are greyed out if the access level of the user is below the password level set in the User Management window (see page 94).
- For more details about the **Access Level** field, see *User Access Levels* on the facing page.

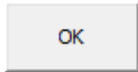
4. You can check **Set as Default user** if you want this user to be logged in automatically when Simple starts.



Notes:

- The default user will be logged in automatically without a password prompt. Therefore, this option is not recommended for users with high access level (Supervisor or Engineer).
- If no user is set as default, a manual login (see page 7) will be required to operate the saw.

5. Click



User Access Control

User access control enables plant management to restrict certain personnel from accessing some advanced features and altering system settings.

User Access Levels

Each user can be assigned one of the three access levels defined below:

	Operator	Supervisor	Engineer
Options	✗	✓	✓
Printer Setup	✓	✓	✓
Plate Marking Control Panel	✓	✓	✓
Batch Optimisation	✗	✓	✓
User Management	✗	✓	✓
Length Calibration	✗	✓	✓
Setup	✗	✗	✓
Everything else	✓	✓	✓

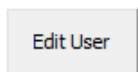
✓ full access ✓ limited access ✗ no access

Change the access level of a user

To change the access level of a user, do the following:

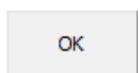
1. In the User Management window, select the user you wish to change the access level of.

2. Click



3. Select the new access level from the drop-down list.

4. Click



Password Level

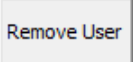
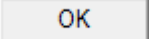
The Password Level feature makes it possible to disable the password protection for the users below a certain access level. This setting can be changed in the Password Level field at the bottom of the User Management window.

EXAMPLE

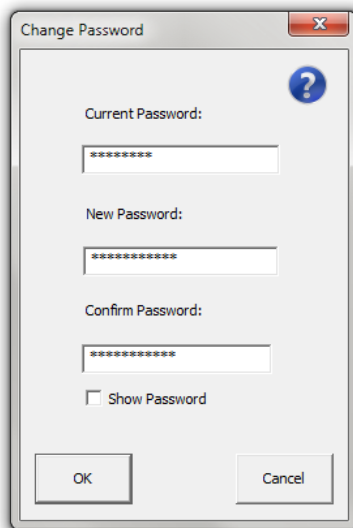
By default, password protection is enabled for all access levels (Password Level is set to Operator). If you want to enable the password protection for the users with a supervisor or engineer access level but not with an operator access level, select Supervisor from the Password Level drop-down list.

Remove a user

To remove a user, do the following:

1. In the User Management window, select the user you wish to remove.
2. Click .
3. Click  in the confirmation window.

Change the logged-in user's password



The password of the currently logged-in user can be easily changed in the Change Password window. To open the Change Password window, select Change Password... from the Tools drop-down menu in the Simple menu bar.



Note: This feature is greyed out if the access level of the currently logged-in user is below the password level set in the User Management window. For more details, see *Password Level* on the previous page, *User Access Levels* on page 93 and *Change the access level of a user* on page 93.

PRODUCTION STATISTICS

Simple provides plant management with three means of monitoring production. The software produces daily reports, monthly reports and user summaries.

Statistics webpage

The web-based Statistics page displays graphs about your saw's uptime and cut history, and contains convenient links to the daily and monthly report spreadsheets.

To go to the Statistics webpage, select **Statistics...** from the **Tools** drop-down menu in the Simple menu bar.

Alternatively, you can enter "localhost:8889/stats" in the address bar of your local browser.



Notes:

- The webserver can be accessed remotely by replacing "localhost" with the IP address or local hostname of the machine that runs Simple. Your network and firewall configuration may need to be adjusted to allow remote access.
- The webserver port (8889 by default) can be changed in the **General** tab of the Options window (see page 41).

Daily Reports

The daily reports provide an overview of the production levels achieved on the saw. They are particularly useful for monitoring downtimes and the number of pieces cut on a particular day.

The daily reports are written in the file named "**Statistics.xls**". A daily report is added to this file every day the saw operates. The file contains a line for each daily report.

Each line consists of the following fields from left to right:

- › **DATE:** date the line of data relates to
- › **MEMBERS CUT:** number of members cut in the day
- › **OFFCUT BLOCKS:** number of offcut blocks cut in the day

- › **OFFCUT WEDGES**: number of offcut wedges cut in the day
- › **LENGTH CONSUMED** (in metres): length of material consumed in the day
- › **LENGTH PRODUCED MEMBERS** (in metres): length of material used in the day to produce members
- › **LENGTH PRODUCED OFFCUTS** (in metres): length of material used in the day to produce offcuts
- › **WASTE**: percentage of non-reusable waste out of the total amount of material consumed in the day
- › **OPERATING TIME**: amount of time in the day that the saw was in production, according to the **Maximum Command Execution Time** defined in the **Statistics** tab of the **Options** window (see page 53)
- › **SHIFT CAPACITY**: number of pieces (including offcuts) that could have been cut in eight hours of operating time



Note: the shift capacity can be used to predict how the saw is performing from day to day and to assess the potential benefit of changes made to the optimisation settings or setup variables.

Monthly Reports

The monthly reports contain detailed production data collected regularly throughout the day. They are particularly useful for monitoring production trends over the course of the day, week or even month.

The monthly reports are named after the month they pertain to (e.g. "**May 2022.xls**"). A new file is automatically created at the beginning of each month. A new line is added to the file at a regular time interval, according to the **Monthly Statistics Interval** defined in the **Statistics** tab of the **Options** window (see page 53).

Each line consists of the following fields from left to right:

- › **DAY**: day of the week the line of data relates to
- › **DATE**: day number of the month the line of data relates to
- › **TIME**: end time of the interval the line of data relates to
- › **MEMBERS CUT**: number of members cut in the time interval
- › **OFFCUT BLOCKS**: number of offcut blocks cut in the time interval
- › **OFFCUT WEDGES**: number of offcut wedges cut in the time interval
- › **LENGTH PRODUCED** (in metres): length of the pieces (including offcuts) cut in the time interval
- › **MATERIAL CONSUMED**: number of timbers consumed in the time interval
- › **LENGTH CONSUMED** (in metres): length of material consumed in the time interval
- › **COST CONSUMED**: cost of the material consumed in the time interval

- › **OPERATING TIME** (in minutes): amount of time in the time interval that the saw was in production, according to the **Maximum Command Execution Time** defined in the **Statistics** tab of the Options window (see page 53)
- › **USER**: name of the user who was logged in at that time.

User Summaries

The user summaries provide an overview of the production levels achieved by a particular user.

The user summaries are written in the file named "**Users.txt**" located in the `C:\Simple\` folder by default. The file contains a line for each user currently registered.

Each line consists of the following tab-delimited fields from left to right:

- › **USER**: name of the user the line of data relates to
- › **ACCESS LEVEL**: access level assigned to the user (0=Operator, 1=Supervisor and 2=Engineer)
For more details, see *User Access Levels* on page 93.
- › **MEMBERS CUT**: number of members cut by the user to date
- › **OFFCUT BLOCKS**: number of offcut blocks cut by the user to date
- › **OFFCUT WEDGES**: number of offcut wedges cut by the user to date

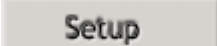
ADVANCED FEATURES

Setup



Note: This feature is available to Engineer access level only.

The Setup window is used to modify advanced variables.

To open the Setup window, click  on the Control Bar (see page 31).

Param	Description	Min	Max	Default	Value
P500	Software Version	0.000	0.000	24.000	24.000
P501	Right Feeder Scale (pulses per mm)	0.100	10000.000	312.283	312.283
P502	Left Feeder Scale (pulses per mm)	0.100	10000.000	1508.500	1508.500
P503	Y-axis Scale (pulses per mm)	0.100	10000.000	1000.000	1000.000
P504	Z-axis Scale (pulses per mm)	0.100	10000.000	2000.000	2000.000
P505	B-axis Scale (pulses per deg)	0.100	10000.000	343.817	343.817
P506	C-axis Scale (pulses per deg) /Calibrates t...	0.100	10000.000	568.889	568.889
P507	Right Feeder Encoder Scale (pulses per	0.100	10000.000	12.103	12.103
P508	Left Feeder Encoder Scale (pulses per	0.100	10000.000	12.074	12.074
P509	Tail Cut Shift X (mm)	-5.000	5.000	0.000	0.000
P510	Tail Cut Shift Y (mm)	-5.000	5.000	0.000	0.000
P511	Tail Cut Shift Z (mm)	-5.000	5.000	0.000	0.000
P512	Right Feeder Zero Offset (mm)	0.000	0.000	155.000	155.000
P513	Left Feeder Zero Offset (mm)	0.000	0.000	-155.000	-155.000
P514	Y-axis Zero Offset (mm)	100.000	300.000	185.000	185.000
P515	Z-axis Zero Offset (mm)	-250.000	-50.000	-100.000	-100.000
P516	B-axis Zero Offset (deg)	-45.000	0.000	-24.129	-24.129
P517	C-axis Zero Offset (deg)	-250.000	-50.000	-184.510	-184.510
P518		0.000	0.000	0.000	0.000



CAUTION

Modifying advanced variables may have serious and adverse effects on the performance of the saw.

Click any row to have additional information about the corresponding variable.

The variables' values are automatically read in when Simple is started. To refresh these values, click .

To modify a variable, do the following:

1. Click the editable field in the Value column.



Note: the greyed out fields are not editable.

2. Enter a value comprised between the Min and Max allowed values.
3. Press the key.
 - ↳ A confirmation window pops up.
4. Click .
 - ↳ The change is in effect until the machine is powered down.



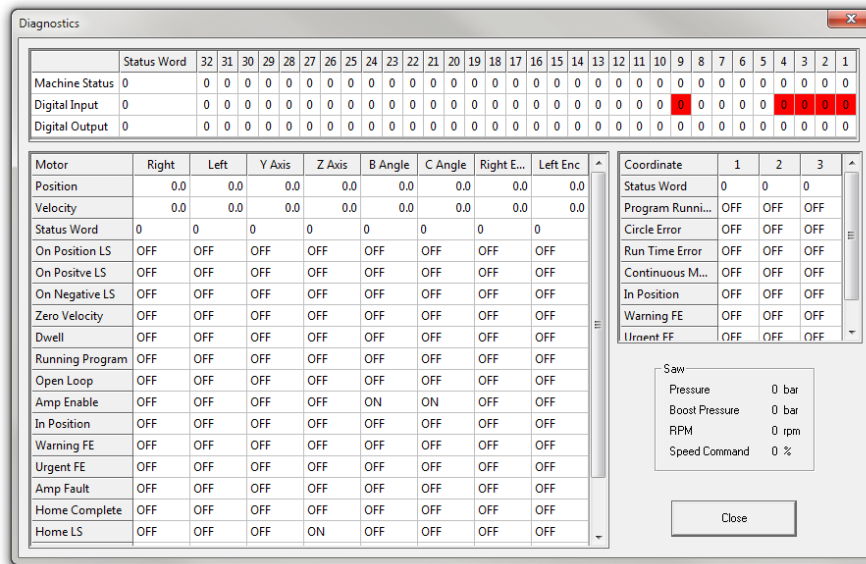
Note: when the machine is powered down, any unsaved changes will be lost and the variables will be reset to their last saved values.

To permanently save the changes, click .

Diagnostics

The Diagnostics window gives detailed information about the current status of the machine and any errors that may be present.

Most errors will automatically force this window to pop up. Otherwise it can be accessed by clicking **Diagnostics** on the Control Bar (see page 31).



If an error is present, the corresponding status box in the top matrix will show in red or yellow. The lower matrix represents each axis motor status indicated with the axis name on the horizontal title bar and the status name on the vertical title bar.

A red box indicates a fault condition.

↳ The saw is completely stopped. Attention is required before resuming operation.

A yellow box indicates a warning condition.

↳ The operation is suspended. In most cases, operation can be resumed by pressing the green START button on the operator console.

For a quick description of the error, hover over the box to display a tooltip. Click the box to show a pop-up with further information about the error.



Note: all other information is not used or obsolete.

Kickoff Rule Syntax

Kickoff rules are comparisons that define specific members in order to send them to a particular kickoff location.

EXAMPLE

The following rule sends all webs to station 5.

Rule	Location
type = web	5

The following rule sends all members longer than 1 m to station 2.

Rule	Location
length > 1000	2

The following logical operators are supported:

= (or ==)	equal
!=	not equal
<	less than
<=	less than or equal to
>	greater than
>=	greater than or equal to

A rule may have multiple conditions. All conditions must be met for the rule to apply. Conditions are separated by an ampersand (&).

EXAMPLE

The following rule sends all webs longer than 1 m to station 7.

Rule	Location
type = web & length > 1000	7

A rule with no condition is always true (i.e. any member is sent to the specified location).

EXAMPLE

The following rule sends any member to station 3.

Rule	Location
	3

If multiple rules are specified, the first rule to have its conditions met is applied (starting from the top of the list and moving down).

The following fields are supported:

Member Field	Value Type	Description
name	text	name of the member (job:truss:member)
job	text	designation of the job the member belongs to
truss	text	designation of the truss the member is part of
member	text	designation of the member within the truss
material	text	description of the material assigned to the member
type	text	type of the member (e.g. web)
width	number	width of the member (in mm)
thickness	number	thickness of the member (in mm)
length	number	overall length of the member including any automatic length adjustment (in mm)
boardlength	number	length of the board used to cut the member (in mm)
nominallength	number	overall length of the member as it appears in the job file (in mm)
number	number	member number out of the total quantity of the same member (e.g. 3 for member 3 of 6)
totalnumber	number	total number of the same member to be cut (e.g. 6 for a member cut 6 times)
done	flag	true or false depending on whether the member has already been cut
binnumber	number	number of the bunk the board was taken from to cut the member (if an automated timber retrieval system is installed)
trussordernumber	number	order number of the truss as it appears in the job file
numcuts	number	number of cuts on the member
invalidcuts	number	number of invalid cuts on the member
The fields below are applicable to Blade XML job files only.		
nextstation	text	NextStation value for the member as it appears in the job file
side	text	Side value for the member as it appears in the job file
aoside	text	AOSide value for the member as it appears in the job file
trusslength	number	length of the truss (in mm)



Note: field names and values are case-insensitive.

Automatic Length Adjustment

The Automatic Length Adjustment is a feature that makes it possible to automatically lengthen or shorten some members, depending on their type and nominal length, to suit your plant's particular needs.

When an automatic length adjustment has been applied to a member, the new length is indicated in red. The nominal length is indicated in parentheses on the Member Diagram (see page 29).



Note: to set up or change the Automatic Length Adjustment on your saw, please contact Vekta Automation.

SIMPLE CHANGELOG

Version 14

- Bugfixes
- Print multiple images / texts
- Printer markings
- Print Kickoff location
- Picklist interface
- Sort by build order
- Exclude material grades from offcut
- Board tracker
- Board tracking status
- Volume statistics in daily and monthly reports

Version 13

- Bugfixes
- Auto save files
- Auto archive files
- Manually mark job as complete
- Nail plate orientation marks
- Panel numbers on trenched plates
- Member Designation Labels window
- Saw blade indicator

- Stak'n'Gap integration
- Packfeeder 2 integration
- Export materials list to CSV or TXT files
- Workday uptime percentage statistic

Version 12

- Bugfixes
- Auto load/close files
- Web notifications
- Remote view & interaction
- Ply bracing marking (shaded area)
- Picklist (web view)
- Files associations (double-click to open)
- Telemetry server
- Vekta Rescue auto config update

Version 11

- Bugfixes
- Overhang marking
- Raise and clear error codes from dev console
- Customisable member flipping priorities
- Truss boot marking
- Jack truss intersection marking (public)
- Machine Name, Site Name & Vekta ID introduced
- Machine Name on picklist
- Raking Stud member designation
- Bundle numbers
- Statistics webpage
- Reuse docking
- Waste column in optimised list

Version 10

- Bugfixes
- Kickoff Selection
- Mid-stick resume
- Jack truss intersection marking (for Placemakers only)

- 3D preview
- Bevel cut orientation
- Interleaved file merge
- Uptime display on control bar
- Column selection
- Truss order number
- New markings
- Flip members
- Linear Pick Line support

Version 9

- Bugfixes
- Error Code reporting
- Mitre stacking
- New user management system
- Snapshots (triggered by error code)

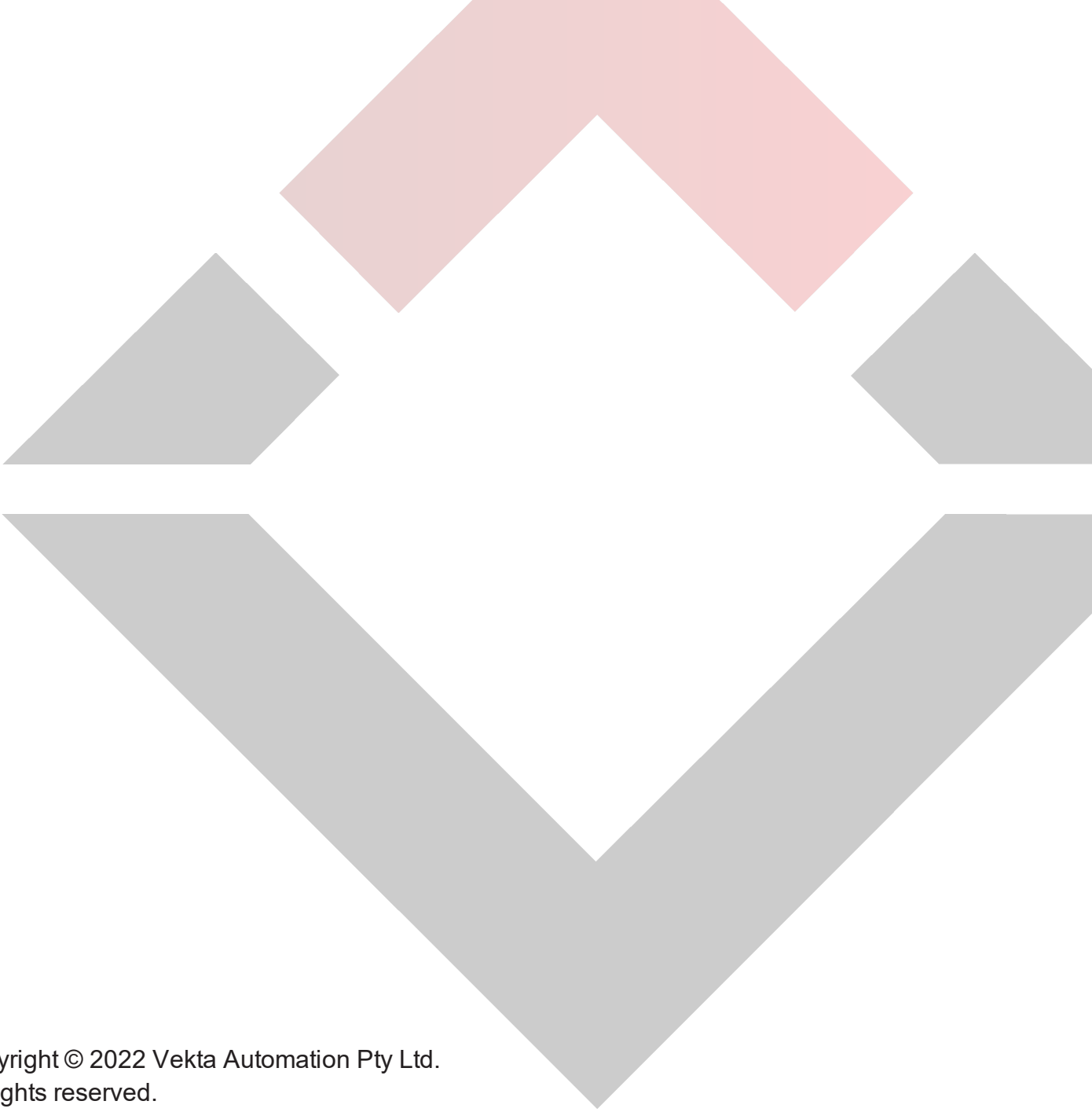
Version 8

- Bugfixes
- Print company name on top
- Filter company name by material type
- Open File Location
- Supports different member shapes with the same name
- Omni XML (aka Blade XML) file support
- WoodRunner interface
- Help system (online only)
- Batch optimisation
- Pre & Post Stacking
- Program grids hidden by default
- Job Sequencing

Version 7

- Bugfixes
- Print company name BMP (side only)
- Undercuts
- Tabbed documents

- Activation UI
- Moved tick boxes to toolbar (easier control)
- Auto Length Adjustment
- Run Simple from an arbitrary directory (e.g. from a thumb drive)
- Save selected members into separate file
- Stacking support for Packfeeder
- "Optimise" button changed to "Optimise Uncut"



Copyright © 2022 Vekta Automation Pty Ltd.
All rights reserved.

Information in this document is subject to change without notice. No part of this publication may be reproduced, stored in a retrieval system, or transmitted in any form or any means electronic or mechanical, including photocopying and recording for any purpose other than the purchaser's personal use without the written permission of Vekta Automation Pty Ltd.

Vekta Automation Pty Ltd
32 Millrose Drive
Malaga WA 6090
+61 8 6117 0660